

For Research Use Only

# SRX1 Polyclonal antibody, PBS Only

Catalog Number: 14273-1-PBS

Featured Product



## Basic Information

Catalog Number:

14273-1-PBS

Source:

Rabbit

Isotype:

IgG

Immunogen Catalog Number:

AG5613

GenBank Accession Number:

BC047707

GeneID (NCBI):

140809

UNIPROT ID:

Q9BYNO

Full Name:

sulfiredoxin 1 homolog (S. cerevisiae)

Calculated MW:

14 kDa

Observed MW:

14 kDa

Purification Method:

Antigen affinity purification

## Applications

Tested Applications:

WB, IHC, IP, Indirect ELISA

Species Specificity:

human, mouse

## Background Information

### Storage

Storage:

Store at -80°C.

The product is shipped with ice packs. Upon receipt, store it immediately at -80°C

Storage Buffer:

PBS only, pH7.3

For technical support and original validation data for this product please contact:

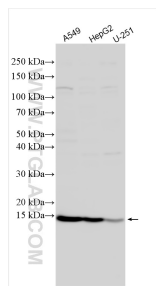
T: 4006900926

E: [Proteintech-CN@ptglab.com](mailto:Proteintech-CN@ptglab.com)

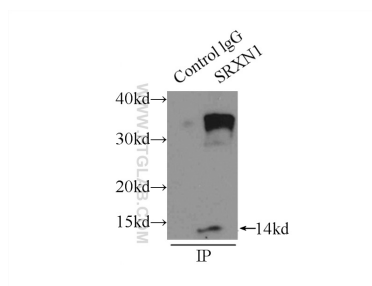
W: [ptgcn.com](http://ptgcn.com)

This product is exclusively available under Proteintech Group brand and is not available to purchase from any other manufacturer.

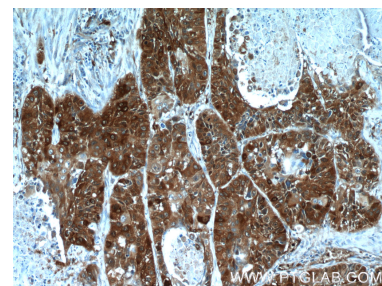
## Selected Validation Data



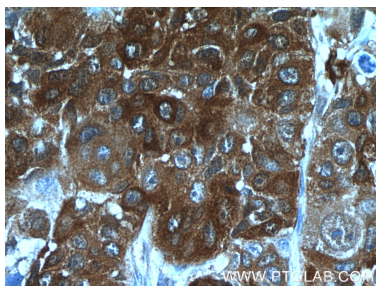
Various lysates were subjected to SDS PAGE followed by western blot with 14273-1-AP (SRX1 antibody) at dilution of 1:1500 incubated at room temperature for 1.5 hours. This data was developed using the same antibody clone with 14273-1-PBS in a different storage buffer formulation.



IP result of anti-SRX1 (IP:14273-1-AP, 3ug; Detection:14273-1-AP 1:400) with A549 cells lysate 3300ug. This data was developed using the same antibody clone with 14273-1-PBS in a different storage buffer formulation.



Immunohistochemical analysis of paraffin-embedded human lung cancer tissue slide using 14273-1-AP (SRX1 Antibody) at dilution of 1:50 (under 10x lens). This data was developed using the same antibody clone with 14273-1-PBS in a different storage buffer formulation.



Immunohistochemical analysis of paraffin-embedded human lung cancer tissue slide using 14273-1-AP (SRX1 Antibody) at dilution of 1:50 (under 40x lens). This data was developed using the same antibody clone with 14273-1-PBS in a different storage buffer formulation.