

For Research Use Only

# SRX1 Polyclonal antibody

Catalog Number: 14273-1-AP

Featured Product

32 Publications



## Basic Information

**Catalog Number:**

14273-1-AP

**Size:**

1000 µg/ml

**Source:**

Rabbit

**Isotype:**

IgG

**Immunogen Catalog Number:**

AG5613

**GenBank Accession Number:**

BC047707

**GeneID (NCBI):**

140809

**UNIPROT ID:**

Q9BYNO

**Full Name:**

sulfiredoxin 1 homolog (S. cerevisiae)

**Calculated MW:**

14 kDa

**Observed MW:**

14 kDa

**Purification Method:**

Antigen affinity purification

**Recommended Dilutions:**

WB 1:500-1:3000

IP 0.5-4.0 µg for 1.0-3.0 mg of total protein lysate

IHC 1:20-1:200

## Applications

**Tested Applications:**

WB, IP, IHC, ELISA

**Cited Applications:**

WB, IF, IHC

**Species Specificity:**

human, mouse

**Cited Species:**

human, rat, mouse

**Note-IHC:** suggested antigen retrieval with **TE buffer pH 9.0; (\*) Alternatively, antigen retrieval may be performed with citrate buffer pH 6.0**

**Positive Controls:**

**WB:** A549 cells, mouse liver tissue, Transfected HEK-293 cells, HepG2 cells, U-251 cells

**IP:** A549 cells,

**IHC:** human lung cancer tissue, human breast cancer tissue, human kidney tissue

## Background Information

### Notable Publications

Author	Pubmed ID	Journal	Application
Qian-Wen Rao	32955798	Cancer Med	WB,IHC
Ramon Martinez	33109619	J Pharmacol Exp Ther	WB
Soini YY	24189098	Pathol Res Pract	IHC

## Storage

**Storage:**

Store at -20°C. Stable for one year after shipment.

**Storage Buffer:**

PBS with 0.02% sodium azide and 50% glycerol pH 7.3.

Aliquoting is unnecessary for -20°C storage

For technical support and original validation data for this product please contact:

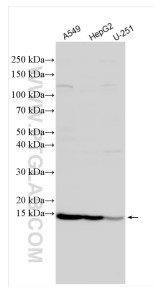
T: 4006900926

E: Proteintech-CN@ptglab.com

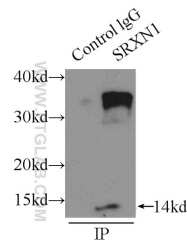
W: ptgcn.com

**This product is exclusively available under Proteintech Group brand and is not available to purchase from any other manufacturer.**

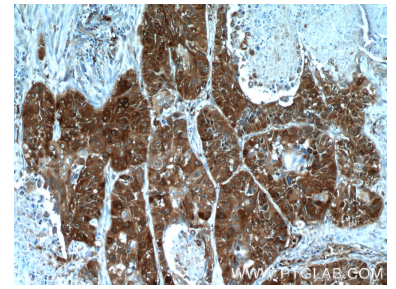
## Selected Validation Data



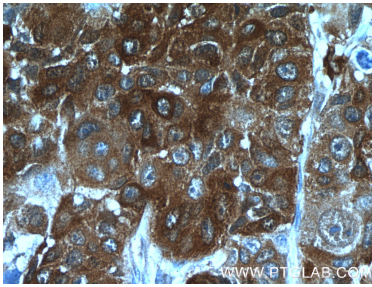
Various lysates were subjected to SDS PAGE followed by western blot with 14273-1-AP (SRX1 antibody) at dilution of 1:1500 incubated at room temperature for 1.5 hours.



IP result of anti-SRX1 (IP:14273-1-AP, 3ug; Detection:14273-1-AP 1:400) with A549 cells lysate 3300ug.



Immunohistochemical analysis of paraffin-embedded human lung cancer tissue slide using 14273-1-AP (SRX1 Antibody) at dilution of 1:50 (under 10x lens).



Immunohistochemical analysis of paraffin-embedded human lung cancer tissue slide using 14273-1-AP (SRX1 Antibody) at dilution of 1:50 (under 40x lens).