

For Research Use Only

# CEBPE Polyclonal antibody

Catalog Number: 14271-1-AP **1 Publications**



## Basic Information

Catalog Number:

14271-1-AP

Size:

300 µg/ml

Source:

Rabbit

Isotype:

IgG

Immunogen Catalog Number:

AG5589

GenBank Accession Number:

BC035797

GeneID (NCBI):

1053

UNIPROT ID:

Q15744

Full Name:

CCAAT/enhancer binding protein  
(C/EBP), epsilon

Calculated MW:

31 kDa

Observed MW:

32 kDa

Purification Method:

Antigen affinity purification

Recommended Dilutions:

WB 1:200-1:1000

IF 1:50-1:500

## Applications

Tested Applications:

IF/ICC, WB, ELISA

Cited Applications:

WB

Species Specificity:

human, mouse, rat

Cited Species:

human

Positive Controls:

WB : mouse liver tissue, U-937 cells

IF : HepG2 cells,

## Background Information

### Notable Publications

| Author       | Pubmed ID | Journal          | Application |
|--------------|-----------|------------------|-------------|
| Jia-Yu Zhong | 32483833  | Ann N Y Acad Sci | WB          |

## Storage

Storage:

Store at -20°C. Stable for one year after shipment.

Storage Buffer:

PBS with 0.02% sodium azide and 50% glycerol pH 7.3.

Aliquoting is unnecessary for -20°C storage

For technical support and original validation data for this product please contact:

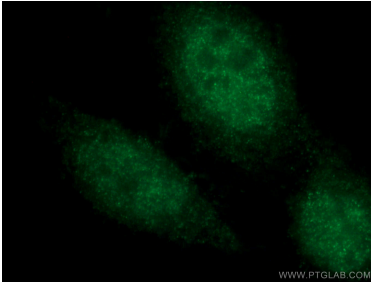
T: 4006900926

E: [Proteintech-CN@ptglab.com](mailto:Proteintech-CN@ptglab.com)

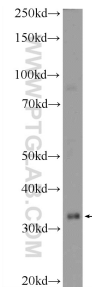
W: [ptgcn.com](http://ptgcn.com)

**This product is exclusively available under Proteintech Group brand and is not available to purchase from any other manufacturer.**

## Selected Validation Data



Immunofluorescent analysis of (4% PFA) fixed HepG2 cells using 14271-1-AP (CEBPE antibody) at dilution of 1:50 and Alexa Fluor 488-conjugated AffiniPure Goat Anti-Rabbit IgG(H+L).



mouse liver tissue were subjected to SDS PAGE followed by western blot with 14271-1-AP (CEBPE Antibody) at dilution of 1:300 incubated at room temperature for 1.5 hours.