

For Research Use Only

ABCG4 Polyclonal antibody

Catalog Number: 14269-1-AP

1 Publications



Basic Information

Catalog Number:

14269-1-AP

Size:

293 µg/ml

Source:

Rabbit

Isotype:

IgG

Immunogen Catalog Number:

AG5587

GenBank Accession Number:

BC041091

GeneID (NCBI):

64137

UNIPROT ID:

Q9H172

Full Name:

ATP-binding cassette, sub-family G (WHITE), member 4

Calculated MW:

72 kDa

Observed MW:

60 kDa, 90-100 kDa

Purification Method:

Antigen affinity purification

Recommended Dilutions:

WB 1:500-1:1000

IHC 1:20-1:200

Applications

Tested Applications:

IHC, WB, ELISA

Cited Applications:

WB, IHC

Species Specificity:

human, mouse, rat

Cited Species:

human

Note-IHC: suggested antigen retrieval with TE buffer pH 9.0; (*) Alternatively, antigen retrieval may be performed with citrate buffer pH 6.0

Positive Controls:

WB : U-937 cells, mouse brain tissue

IHC : human liver cancer tissue,

Background Information

Notable Publications

Author	Pubmed ID	Journal	Application
Guang Yang	26270652	PLoS One	WB, IHC

Storage

Storage:

Store at -20°C. Stable for one year after shipment.

Storage Buffer:

PBS with 0.02% sodium azide and 50% glycerol pH 7.3.

Aliquoting is unnecessary for -20°C storage

For technical support and original validation data for this product please contact:

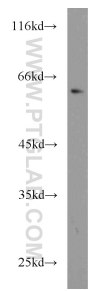
T: 4006900926

E: Proteintech-CN@ptglab.com

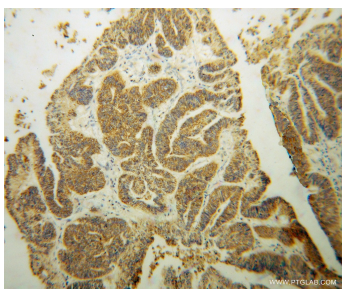
W: ptgcn.com

This product is exclusively available under Proteintech Group brand and is not available to purchase from any other manufacturer.

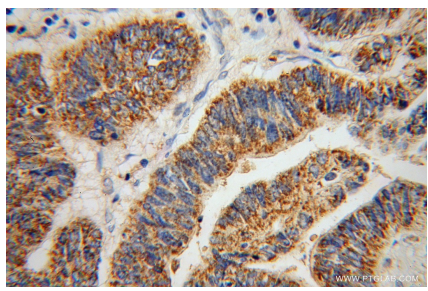
Selected Validation Data



U-937 cells were subjected to SDS PAGE followed by western blot with 14269-1-AP (ABCG4 antibody) at dilution of 1:800 incubated at room temperature for 1.5 hours.



Immunohistochemical analysis of paraffin-embedded human liver cancer using 14269-1-AP (ABCG4 antibody) at dilution of 1:50 (under 10x lens).



Immunohistochemical analysis of paraffin-embedded human liver cancer using 14269-1-AP (ABCG4 antibody) at dilution of 1:50 (under 40x lens).