

For Research Use Only

ITPKC Polyclonal antibody

Catalog Number: 14267-1-AP



Basic Information

Catalog Number:

14267-1-AP

Size:

307 µg/ml

Source:

Rabbit

Isotype:

IgG

Immunogen Catalog Number:

AG5583

GenBank Accession Number:

BC060788

GeneID (NCBI):

80271

UNIPROT ID:

Q96DU7

Full Name:

inositol 1,4,5-trisphosphate 3-kinase C

Calculated MW:

75 kDa

Observed MW:

100-105 kDa

Purification Method:

Antigen affinity purification

Recommended Dilutions:

WB 1:500-1:1000

IP 0.5-4.0 µg for 1.0-3.0 mg of total protein lysate

IHC 1:50-1:500

IF 1:20-1:200

Applications

Tested Applications:

IF/ICC, IHC, IP, WB, ELISA

Species Specificity:

human

Note-IHC: suggested antigen retrieval with TE buffer pH 9.0; (*) Alternatively, antigen retrieval may be performed with citrate buffer pH 6.0

Positive Controls:

WB : MDA-MB-453s cells, human heart tissue

IP : HepG2 cells,

IHC : human breast cancer tissue, human heart tissue, human lymphoma tissue

IF : HepG2 cells,

Background Information

ITPKC (Inositol-trisphosphate 3-kinase C) is also named as IP3KC and belongs to the inositol phosphokinase (IPK) family. It can phosphorylate inositol 2,4,5-trisphosphate to inositol 2,4,5,6-tetraphosphate and is relatively weakly activated by the calcium-calmodulin complex. ITPKC also acts as a negative regulator of T-cell activation through the Ca(2+)/NFAT signaling pathway, and the C allele may contribute to immune hyperreactivity in Kawasaki disease (PMID:17160344).

Storage

Storage:

Store at -20°C. Stable for one year after shipment.

Storage Buffer:

PBS with 0.02% sodium azide and 50% glycerol pH 7.3.

Aliquoting is unnecessary for -20°C storage

For technical support and original validation data for this product please contact:

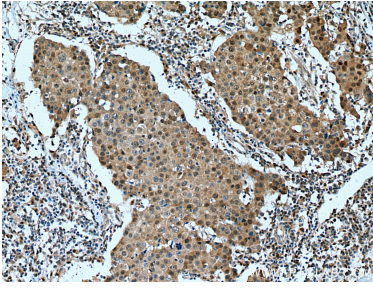
T: 4006900926

E: Proteintech-CN@ptglab.com

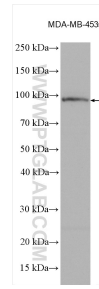
W: ptgcn.com

This product is exclusively available under Proteintech Group brand and is not available to purchase from any other manufacturer.

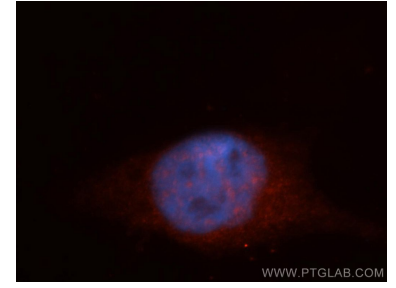
Selected Validation Data



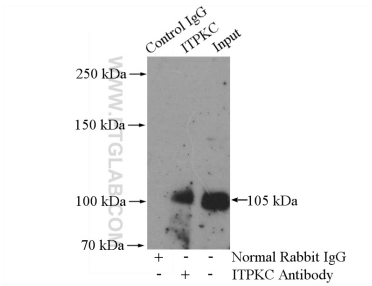
Immunohistochemical analysis of paraffin-embedded human breast cancer tissue slide using 14267-1-AP (ITPKC antibody) at dilution of 1:200 (under 10x lens). Heat mediated antigen retrieval with Tris-EDTA buffer (pH 9.0).



MDA-MB-453s cells were subjected to SDS PAGE followed by western blot with 14267-1-AP (ITPKC antibody) at dilution of 1:600 incubated at room temperature for 1.5 hours.



Immunofluorescent analysis of HepG2 cells, using ITPKC antibody 14267-1-AP at 1:50 dilution and Rhodamine-labeled goat anti-rabbit IgG (red). Blue pseudocolor = DAPI (fluorescent DNA dye).



IP result of anti-ITPKC (IP:14267-1-AP, 4ug; Detection:14267-1-AP 1:400) with HepG2 cells lysate 1600ug.