

For Research Use Only

PNPLA6 Polyclonal antibody

Catalog Number: 14261-1-AP

2 Publications



Basic Information

Catalog Number:

14261-1-AP

Size:

600 µg/ml

Source:

Rabbit

Isotype:

IgG

Immunogen Catalog Number:

AG5546

GenBank Accession Number:

BC051768

GeneID (NCBI):

10908

UNIPROT ID:

Q8IY17

Full Name:

patatin-like phospholipase domain containing 6

Calculated MW:

150 kDa

Observed MW:

150 kDa

Purification Method:

Antigen affinity purification

Recommended Dilutions:

WB 1:500-1:1000

IF/ICC 1:10-1:100

Applications

Tested Applications:

WB, IF/ICC, IP, ELISA

Cited Applications:

WB

Species Specificity:

human

Cited Species:

human

Positive Controls:

WB : HEK-293 cells, SH-SY5Y cells

IF/ICC : HepG2 cells, MCF-7 cells

Background Information

PNPLA6(patatin-like phospholipase domain-containing protein 6) is also named as NTE(neuropathy target esterase) and belongs to the NTE family. It plays an important role in motor neuron development and implicated overexpression of BMP signaling(PMID:22996643). Defects in PNPLA6 are the cause of spastic paraplegia autosomal recessive type 39 (SPG39)(PMID:18313024). This protein has a glycosylation site that it can be glycosylated(PMID:9576844). It has 3 isoforms produced by alternative splicing.

Notable Publications

Author	Pubmed ID	Journal	Application
Alexandre Luscher	31216233	Mol Biol Cell	
Ascano Manuel M Jr	23235829	Nature	WB

Storage

Storage:

Store at -20°C. Stable for one year after shipment.

Storage Buffer:

PBS with 0.02% sodium azide and 50% glycerol pH 7.3.

Aliquoting is unnecessary for -20°C storage

For technical support and original validation data for this product please contact:

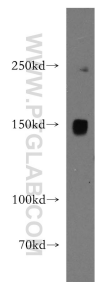
T: 4006900926

E: Proteintech-CN@ptglab.com

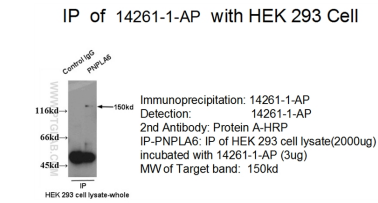
W: ptgcn.com

This product is exclusively available under Proteintech Group brand and is not available to purchase from any other manufacturer.

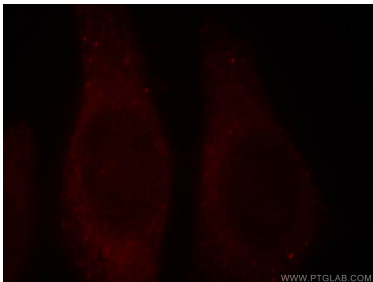
Selected Validation Data



HEK-293 cells were subjected to SDS PAGE followed by western blot with 14261-1-AP (PNPLA6 antibody) at dilution of 1:500 incubated at room temperature for 1.5 hours.



IP result of anti-PNPLA6 (14261-1-AP for IP and Detection) with HEK-293 cells.



Immunofluorescent analysis of HepG2 cells, using PNPLA6 antibody 14261-1-AP at 1:25 dilution and Rhodamine-labeled goat anti-rabbit IgG (red).