

TFCP2L1 Polyclonal antibody

Catalog Number: 14248-1-AP

1 Publications

Basic Information

Catalog Number:

14248-1-AP

Size:

367 µg/ml

Source:

Rabbit

Isotype:

IgG

Immunogen Catalog Number:

AG5520

GenBank Accession Number:

BC064698

GeneID (NCBI):

29842

UNIPROT ID:

Q9NZI6

Full Name:

transcription factor CP2-like 1

Calculated MW:

55 kDa

Observed MW:

55 kDa

Purification Method:

Antigen affinity purification

Recommended Dilutions:

WB 1:500-1:1000

Applications

Tested Applications:

WB, ELISA

Cited Applications:

WB

Species Specificity:

human

Cited Species:

human

Positive Controls:

WB : human placenta tissue,

Background Information

Transcription factor CP2-like protein 1 (TFCP2L1) is a transcriptional regulator critical for maintaining mouse and human embryonic stem cell (ESC) pluripotency. The deletion of TFCP2L1 in mice reduced the expression of renal cell markers including ion transporters and cell identity proteins expressed in different segments of the distal nephron (PMID: 33097957).

Notable Publications

Author	Pubmed ID	Journal	Application
Jian-Jun Wu	38435123	Int J Chron Obstruct Pulmon Dis	WB

Storage

Storage:

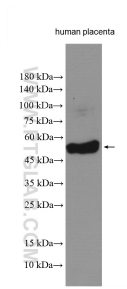
Store at -20°C. Stable for one year after shipment.

Storage Buffer:

PBS with 0.02% sodium azide and 50% glycerol pH 7.3.

Aliquoting is unnecessary for -20°C storage

Selected Validation Data



Human placenta tissue were subjected to SDS PAGE followed by western blot with 14248-1-AP (TFCP2L1 antibody) at dilution of 1:600 incubated at room temperature for 1.5 hours.