

DUSP16 Polyclonal antibody

Catalog Number: 14237-1-AP

4 Publications

Basic Information

Catalog Number:

14237-1-AP

Size:

500 µg/ml

Source:

Rabbit

Isotype:

IgG

Immunogen Catalog Number:

AG5479

GenBank Accession Number:

BC042101

GeneID (NCBI):

80824

UNIPROT ID:

Q9BY84

Full Name:

dual specificity phosphatase 16

Calculated MW:

73 kDa

Observed MW:

70 kDa

Purification Method:

Antigen affinity purification

Recommended Dilutions:

WB 1:500-1:1000

IHC 1:50-1:500

Applications

Tested Applications:

IHC, WB, ELISA

Cited Applications:

WB, IHC

Species Specificity:

human, mouse, rat

Cited Species:

human, mouse

Note-IHC: suggested antigen retrieval with TE buffer pH 9.0; (*) Alternatively, antigen retrieval may be performed with citrate buffer pH 6.0

Positive Controls:

WB: PC-12 cells, COLO 320 cells, HeLa cells, mouse brain tissue

IHC: human colon tissue, human breast cancer tissue

Background Information

DUSP16, also known as MKP-7, is a mitogen-activated protein kinase phosphatase that is a member of the dual specificity protein phosphatase subfamily. DUSP16 dephosphorylates JUN kinases (JNKs) specifically and thereby regulates T-cell differentiation, which can be responsible for the pathogenesis of Burkitt's lymphoma and cerebral ischemia. DUSP16 was also found to induce the expression of VCAM-1 through the suppression of JNK signaling.

Notable Publications

Author	Pubmed ID	Journal	Application
Ze-Qing Pu	34088892	Cell Death Discov	WB
Ya-Min Hou	38583797	J Mol Cell Cardiol	IHC
Atsushi Enomoto	38565204	Int J Hyperthermia	WB

Storage

Storage:

Store at -20°C. Stable for one year after shipment.

Storage Buffer:

PBS with 0.02% sodium azide and 50% glycerol pH 7.3.

Aliquoting is unnecessary for -20°C storage

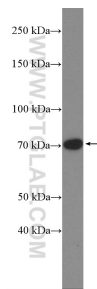
For technical support and original validation data for this product please contact:

T: 4006900926

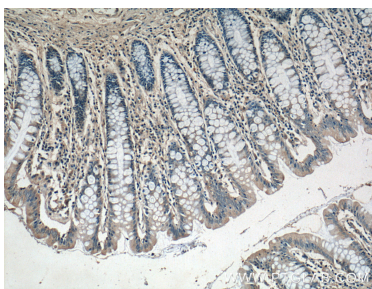
E: Proteintech-CN@ptglab.comW: ptgcn.com

This product is exclusively available under Proteintech Group brand and is not available to purchase from any other manufacturer.

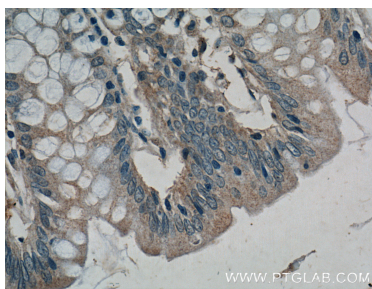
Selected Validation Data



PC-12 cells were subjected to SDS PAGE followed by western blot with 14237-1-AP (DUSP16 Antibody) at dilution of 1:600 incubated at 4 degree celsius over night.



Immunohistochemical analysis of paraffin-embedded human colon tissue slide using 14237-1-AP (DUSP16 Antibody) at dilution of 1:200 (under 10x lens).



Immunohistochemical analysis of paraffin-embedded human colon tissue slide using 14237-1-AP (DUSP16 Antibody) at dilution of 1:200 (under 40x lens).