

For Research Use Only

# LIV-1/ZIP6 Polyclonal antibody

Catalog Number: 14236-1-AP

Featured Product

9 Publications



## Basic Information

### Catalog Number:

14236-1-AP

### Size:

750 µg/ml

### Source:

Rabbit

### Isotype:

IgG

### Immunogen Catalog Number:

AG5478

### GenBank Accession Number:

BC039498

### GeneID (NCBI):

25800

### UNIPROT ID:

Q13433

### Full Name:

solute carrier family 39 (zinc transporter), member 6

### Calculated MW:

85 kDa

### Observed MW:

85-100 kDa, 48 and 32 kDa

### Purification Method:

Antigen affinity purification

### Recommended Dilutions:

WB 1:500-1:2000

IHC 1:50-1:500

## Applications

### Tested Applications:

IHC, WB, ELISA

### Cited Applications:

WB, IHC, IF

### Species Specificity:

human, mouse, rat

### Cited Species:

human, mouse, zebrafish

### Positive Controls:

WB : HeLa cells, MCF-7 cells, A549 cells, 4T1 cells

IHC : human pancreas cancer tissue,

**Note-IHC: suggested antigen retrieval with TE buffer pH 9.0; (\*) Alternatively, antigen retrieval may be performed with citrate buffer pH 6.0**

## Background Information

The zinc transporter LIV-1 (also known as SLC39A6 or ZIP6) was originally identified as an estrogen-induced gene in breast cancer cells. Elevated LIV-1 expression is reportedly related to cancer progression in various types of cancer, including breast, prostate, pancreatic, cervical and liver cancers. While correlation of LIV-1 and prognosis may vary. LIV 1 has 3 isoforms with MW of 85-100 (glycosylation and phosphorylation), 48 and 32 kDa while migrates as different bands in different lysates in SDS-PAGE.

## Notable Publications

Author	Pubmed ID	Journal	Application
Xiao-Bin Cui	26444413	J Transl Med	WB, IHC
Lei Zhao	30851936	Biochem Biophys Res Commun	WB
Wu Chen C	23644492	Nat Genet	WB, IHC

## Storage

### Storage:

Store at -20°C. Stable for one year after shipment.

### Storage Buffer:

PBS with 0.02% sodium azide and 50% glycerol pH 7.3.

Aliquoting is unnecessary for -20°C storage

For technical support and original validation data for this product please contact:

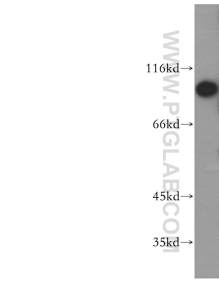
T: 4006900926

E: [Proteintech-CN@ptglab.com](mailto:Proteintech-CN@ptglab.com)

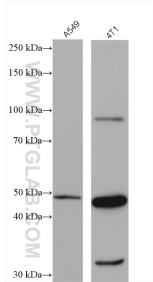
W: [ptgcn.com](http://ptgcn.com)

**This product is exclusively available under Proteintech Group brand and is not available to purchase from any other manufacturer.**

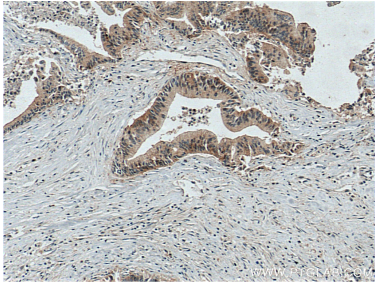
Selected Validation Data



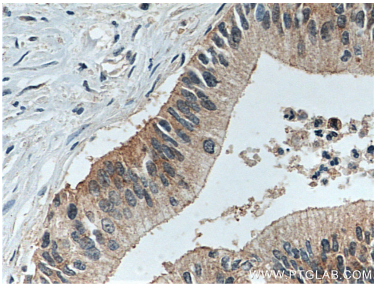
HeLa cells were subjected to SDS PAGE followed by western blot with 14236-1-AP (LIV-1/ZIP6 antibody) at dilution of 1:1000 incubated at room temperature for 1.5 hours.



Various lysates were subjected to SDS PAGE followed by western blot with 14236-1-AP (LIV-1/ZIP6 antibody) at dilution of 1:4000 incubated at room temperature for 1.5 hours.



Immunohistochemical analysis of paraffin-embedded human pancreas cancer tissue slide using 14236-1-AP (LIV-1/ZIP6 antibody) at dilution of 1:200 (under 10x lens. Heat mediated antigen retrieval with Tris-EDTA buffer (pH 9.0).



Immunohistochemical analysis of paraffin-embedded human pancreas cancer tissue slide using 14236-1-AP (LIV-1/ZIP6 antibody) at dilution of 1:200 (under 40x lens. Heat mediated antigen retrieval with Tris-EDTA buffer (pH 9.0).