

For Research Use Only

# S100A9 Polyclonal antibody

Catalog Number: 14226-1-AP

Featured Product

10 Publications



## Basic Information

Catalog Number:

14226-1-AP

Size:

500 µg/ml

Source:

Rabbit

Isotype:

IgG

Immunogen Catalog Number:

AG5465

GenBank Accession Number:

BC047681

GeneID (NCBI):

6280

UNIPROT ID:

P06702

Full Name:

S100 calcium binding protein A9

Calculated MW:

13 kDa

Observed MW:

14 kDa, 28 kDa

Purification Method:

Antigen affinity purification

Recommended Dilutions:

WB 1:200-1:1000

IHC 1:50-1:500

## Applications

Tested Applications:

WB, IHC, ELISA

Cited Applications:

WB, IHC, IF

Species Specificity:

human, mouse, rat

Cited Species:

human, mouse, rat

**Note-IHC: suggested antigen retrieval with TE buffer pH 9.0; (\*) Alternatively, antigen retrieval may be performed with citrate buffer pH 6.0**

Positive Controls:

**WB** : mouse spleen tissue, human blood, human heart tissue, MCF-7 cells, mouse heart tissue, rat heart tissue

**IHC** : human breast cancer tissue, human tonsillitis tissue

## Background Information

S100A9 is a calcium binding protein as a member of the S100 family of proteins. S100 proteins are low molecular weight (9 to 14 kDa) intracellular calcium-binding proteins that control key cellular pathways including regulation of the cytoskeleton, cell migration and adhesion, and host oxidative defense. S100A9 may exist as a homodimer, heterodimer (24 kDa) with an S100A8 partner (S100A8/A9), or as a heterotetramer (28 kDa) with an S100A8 partner (S100A8/A9). S100A8 and S100A9 are found intracellularly in granulocytes, monocytes, and early differentiation stages of macrophages.

## Notable Publications

Author	Pubmed ID	Journal	Application
Ran Wei	33205453	Int J Cancer	IHC,IF
Qiang Liu	35525986	Cell Biosci	WB,IHC
Hong Huang	35582423	Int J Med Sci	IF

## Storage

Storage:

Store at -20°C. Stable for one year after shipment.

Storage Buffer:

PBS with 0.02% sodium azide and 50% glycerol pH 7.3.

Aliquoting is unnecessary for -20°C storage

For technical support and original validation data for this product please contact:

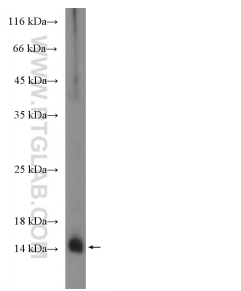
T: 4006900926

E: [Proteintech-CN@ptglab.com](mailto:Proteintech-CN@ptglab.com)

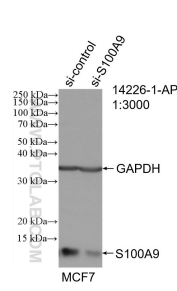
W: [ptgcn.com](http://ptgcn.com)

**This product is exclusively available under Proteintech Group brand and is not available to purchase from any other manufacturer.**

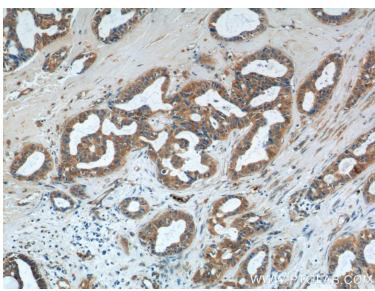
Selected Validation Data



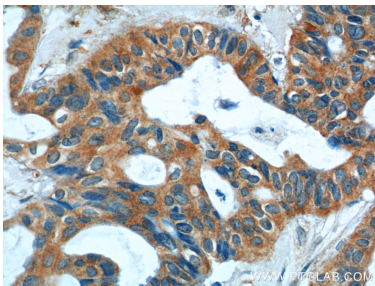
mouse spleen tissue were subjected to SDS PAGE followed by western blot with 14226-1-AP (S100A9 Antibody) at dilution of 1:300 incubated at room temperature for 1.5 hours.



WB result of S100A9 antibody (14226-1-AP; 1:3000; incubated at room temperature for 1.5 hours) with sh-Control and sh-S100A9 transfected MCF-7 cells.



Immunohistochemical analysis of paraffin-embedded human breast cancer tissue slide using 14226-1-AP (S100A9 Antibody) at dilution of 1:200 (under 10x lens).



Immunohistochemical analysis of paraffin-embedded human breast cancer tissue slide using 14226-1-AP (S100A9 Antibody) at dilution of 1:200 (under 40x lens).