

For Research Use Only

Prostein Polyclonal antibody, PBS Only

Catalog Number: 14224-1-PBS



Basic Information

Catalog Number:

14224-1-PBS

Concentration:

1 mg/ml

Source:

Rabbit

Isotype:

IgG

Immunogen Catalog Number:

AG5463

GenBank Accession Number:

BC050416

GeneID (NCBI):

85414

UNIPROT ID:

Q96JT2

Full Name:

solute carrier family 45, member 3

Calculated MW:

59 kDa

Purification Method:

Antigen affinity purification

Applications

Tested Applications:

IHC, Indirect ELISA

Species Specificity:

human

Background Information

Prostein is a prostate tissue-specific protein whose expression is highly restricted to normal and cancerous prostate tissues. Anti-prostein is useful for the identification of prostate adenocarcinomas and is a good marker to identify prostatic origin in metastatic cancer.

Storage

Storage:

Store at -80°C.

The product is shipped with ice packs. Upon receipt, store it immediately at -80°C

Storage Buffer:

PBS only, pH7.3

For technical support and original validation data for this product please contact:

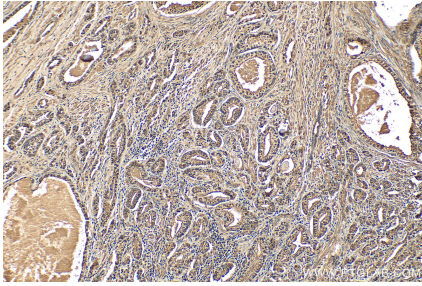
T: 4006900926

E: Proteintech-CN@ptglab.com

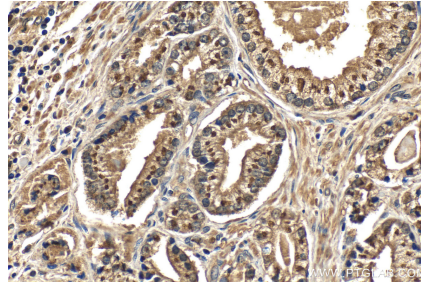
W: ptgcn.com

This product is exclusively available under Proteintech Group brand and is not available to purchase from any other manufacturer.

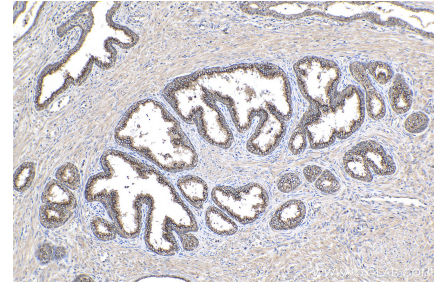
Selected Validation Data



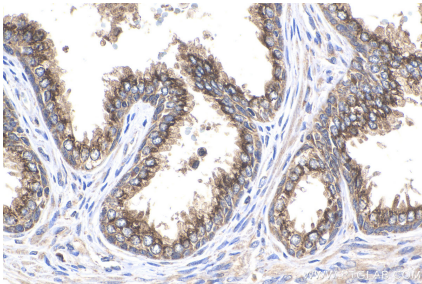
Immunohistochemical analysis of paraffin-embedded human prostate hyperplasia tissue slide using 14224-1-AP (Prostein antibody) at dilution of 1:200 (under 10x lens). This data was developed using the same antibody clone with 14224-1-PBS in a different storage buffer formulation.



Immunohistochemical analysis of paraffin-embedded human prostate hyperplasia tissue slide using 14224-1-AP (Prostein antibody) at dilution of 1:200 (under 40x lens). This data was developed using the same antibody clone with 14224-1-PBS in a different storage buffer formulation.



Immunohistochemical analysis of paraffin-embedded human prostate cancer tissue slide using 14224-1-AP (Prostein antibody) at dilution of 1:400 (under 10x lens). Heat mediated antigen retrieval with Tris-EDTA buffer (pH 9.0). This data was developed using the same antibody clone with 14224-1-PBS in a different storage buffer formulation.



Immunohistochemical analysis of paraffin-embedded human prostate cancer tissue slide using 14224-1-AP (Prostein antibody) at dilution of 1:400 (under 40x lens). Heat mediated antigen retrieval with Tris-EDTA buffer (pH 9.0). This data was developed using the same antibody clone with 14224-1-PBS in a different storage buffer formulation.