

For Research Use Only

PIWIL2 Polyclonal antibody

Catalog Number: 14209-1-AP

Featured Product

2 Publications



Basic Information

Catalog Number:

14209-1-AP

Size:

350 µg/ml

Source:

Rabbit

Isotype:

IgG

Immunogen Catalog Number:

AG5423

GenBank Accession Number:

BC025995

GeneID (NCBI):

55124

UNIPROT ID:

Q8TC59

Full Name:

piwi-like 2 (Drosophila)

Calculated MW:

110 kDa

Purification Method:

Antigen affinity purification

Recommended Dilutions:

IHC 1:20-1:200

Applications

Tested Applications:

IHC, ELISA

Cited Applications:

WB, IF, IHC

Species Specificity:

human, mouse, rat

Cited Species:

human

Note-IHC: suggested antigen retrieval with TE buffer pH 9.0; (*) Alternatively, antigen retrieval may be performed with citrate buffer pH 6.0

Positive Controls:

IHC : human testis tissue, human cervical cancer tissue

Background Information

Notable Publications

Author	Pubmed ID	Journal	Application
Sen Zhou	34738477	J Int Med Res	WB
Jing Dong	38592610	Cell Oncol (Dordr)	WB,IHC,IF

Storage

Storage:

Store at -20°C. Stable for one year after shipment.

Storage Buffer:

PBS with 0.02% sodium azide and 50% glycerol pH 7.3.

Aliquoting is unnecessary for -20°C storage

For technical support and original validation data for this product please contact:

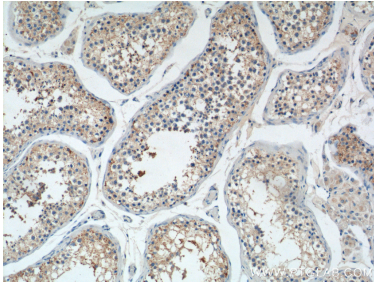
T: 4006900926

E: Proteintech-CN@ptglab.com

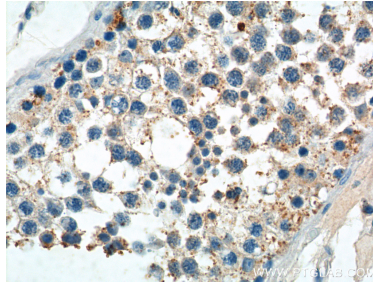
W: ptgcn.com

This product is exclusively available under Proteintech Group brand and is not available to purchase from any other manufacturer.

Selected Validation Data



Immunohistochemical analysis of paraffin-embedded human testis tissue slide using 14209-1-AP (PIWIL2 Antibody) at dilution of 1:50 (under 10x lens).



Immunohistochemical analysis of paraffin-embedded human testis tissue slide using 14209-1-AP (PIWIL2 Antibody) at dilution of 1:50 (under 40x lens).