

For Research Use Only

# CSTF2T Polyclonal antibody

Catalog Number: 14206-1-AP



## Basic Information

**Catalog Number:**

14206-1-AP

**Size:**

600 µg/ml

**Source:**

Rabbit

**Isotype:**

IgG

**Immunogen Catalog Number:**

AG5411

**GenBank Accession Number:**

BC028239

**GeneID (NCBI):**

23283

**UNIPROT ID:**

Q9HOL4

**Full Name:**

cleavage stimulation factor, 3' pre-RNA, subunit 2, 64kDa, tau variant

**Calculated MW:**

64 kDa

**Observed MW:**

65-70 kDa

**Purification Method:**

Antigen affinity purification

**Recommended Dilutions:**

WB 1:2000-1:10000

IP 0.5-4.0 µg for 1.0-3.0 mg of total protein lysate

IHC 1:20-1:200

IF 1:50-1:500

## Applications

**Tested Applications:**

IF/ICC, IHC, IP, WB, ELISA

**Species Specificity:**

human, mouse, rat

**Note-IHC: suggested antigen retrieval with TE buffer pH 9.0; (\*) Alternatively, antigen retrieval may be performed with citrate buffer pH 6.0**

**Positive Controls:**

**WB:** A549 cells, rat brain tissue, human brain tissue, HeLa cells, HepG2 cells, mouse liver tissue

**IP:** mouse brain tissue, HeLa cells

**IHC:** human prostate cancer tissue,

**IF:** HepG2 cells,

## Background Information

### Storage

**Storage:**

Store at -20°C. Stable for one year after shipment.

**Storage Buffer:**

PBS with 0.02% sodium azide and 50% glycerol pH 7.3.

Aliquoting is unnecessary for -20°C storage

For technical support and original validation data for this product please contact:

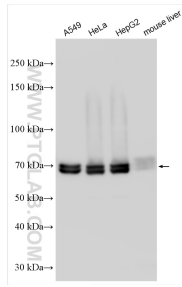
T: 4006900926

E: Proteintech-CN@ptglab.com

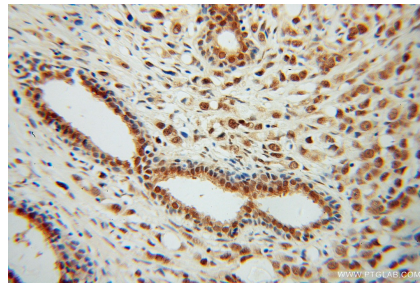
W: ptgcn.com

**This product is exclusively available under Proteintech Group brand and is not available to purchase from any other manufacturer.**

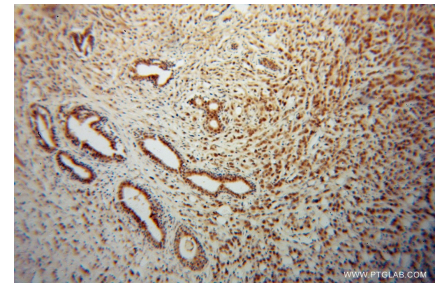
## Selected Validation Data



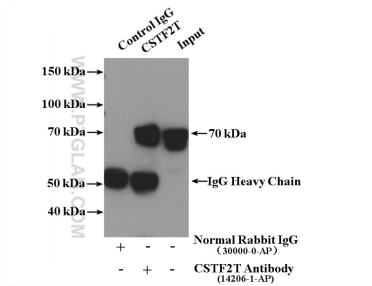
Various lysates were subjected to SDS PAGE followed by western blot with 14206-1-AP (CSTF2T antibody) at dilution of 1:5000 incubated at room temperature for 1.5 hours.



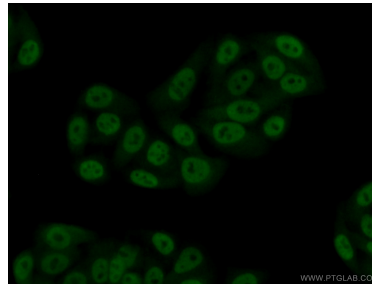
Immunohistochemical analysis of paraffin-embedded human prostate cancer using 14206-1-AP (CSTF2T antibody) at dilution of 1:100 (under 40x lens).



Immunohistochemical analysis of paraffin-embedded human prostate cancer using 14206-1-AP (CSTF2T antibody) at dilution of 1:100 (under 10x lens).



IP result of anti-CSTF2T (IP:14206-1-AP, 4ug; Detection:14206-1-AP 1:1000) with mouse brain tissue lysate 5200ug.



Immunofluorescent analysis of (10% Formaldehyde) fixed HepG2 cells using 14206-1-AP (CSTF2T antibody) at dilution of 1:50 and Alexa Fluor 488-conjugated AffiniPure Goat Anti-Rabbit IgG(H+L).