

For Research Use Only

SLC27A6 Polyclonal antibody

Catalog Number: 14197-1-AP



Basic Information

Catalog Number: 14197-1-AP	GenBank Accession Number: BC041945	Purification Method: Antigen affinity purification
Size: 400 µg/ml	GeneID (NCBI): 28965	Recommended Dilutions: WB 1:500-1:2000
Source: Rabbit	UNIPROT ID: Q9Y2P4	
Isotype: IgG	Full Name: solute carrier family 27 (fatty acid transporter), member 6	
Immunogen Catalog Number: AG5400	Calculated MW: 70 kDa	
	Observed MW: 70 kDa	

Applications

Tested Applications: WB, ELISA	Positive Controls: WB: MCF-7 cells, mouse testis tissue, mouse liver tissue, mouse kidney tissue
Species Specificity: human, mouse	

Background Information

SLC27A6, also known as FATP6, ACSVL2, FACVL2, belongs to the ATP-dependent AMP-binding enzyme family. SLC27A6 mediates the import of long-chain fatty acids (LCFA) into the cell by facilitating their transport at the plasma membrane (PMID: 12556534). SLC27A6 plays a pivotal role in regulating available LCFA substrates from exogenous sources in tissues undergoing high levels of beta-oxidation. SLC27A6 is strongly expressed in heart and localizes to cardiac myocytes. SLC27A6 is expressed at moderate levels in placenta, testis, and adrenal glands (PMID: 12556534).

Storage

Storage:
Store at -20°C. Stable for one year after shipment.
Storage Buffer:
PBS with 0.02% sodium azide and 50% glycerol pH 7.3.
Aliquoting is unnecessary for -20°C storage

For technical support and original validation data for this product please contact:

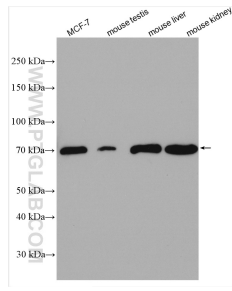
T: 4006900926

E: Proteintech-CN@ptglab.com

W: ptgcn.com

This product is exclusively available under Proteintech Group brand and is not available to purchase from any other manufacturer.

Selected Validation Data



Various lysates were subjected to SDS PAGE followed by western blot with 14197-1-AP (SLC27A6 antibody) at dilution of 1:1000 incubated at room temperature for 1.5 hours.