

For Research Use Only

# CREB5 Polyclonal antibody

Catalog Number: 14196-1-AP **5 Publications**



## Basic Information

**Catalog Number:**

14196-1-AP

**Size:**

387 µg/ml

**Source:**

Rabbit

**Isotype:**

IgG

**Immunogen Catalog Number:**

AG5399

**GenBank Accession Number:**

BC059400

**GeneID (NCBI):**

9586

**UNIPROT ID:**

Q02930

**Full Name:**

cAMP responsive element binding protein 5

**Calculated MW:**

57 kDa

**Observed MW:**

57 kDa

**Purification Method:**

Antigen affinity purification

**Recommended Dilutions:**

WB 1:500-1:3200

## Applications

**Tested Applications:**

WB, ELISA

**Cited Applications:**

WB, IF

**Species Specificity:**

human

**Cited Species:**

human

**Positive Controls:**

WB : HepG2 cells, HeLa cells, human brain tissue, MCF-7 cells

## Background Information

### Notable Publications

Author	Pubmed ID	Journal	Application
Takao Kitagawa	36194562	PLoS One	WB
Di Xu	35100921	Int J Hyperthermia	WB
Jiannan Qiu	36565037	Cancer Med	WB

## Storage

**Storage:**

Store at -20°C. Stable for one year after shipment.

**Storage Buffer:**

PBS with 0.02% sodium azide and 50% glycerol pH 7.3.

Aliquoting is unnecessary for -20°C storage

For technical support and original validation data for this product please contact:

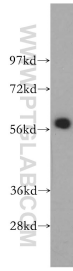
T: 4006900926

E: Proteintech-CN@ptglab.com

W: ptgcn.com

**This product is exclusively available under Proteintech Group brand and is not available to purchase from any other manufacturer.**

## Selected Validation Data



HepG2 cells were subjected to SDS PAGE followed by western blot with 14196-1-AP (CREB5 antibody) at dilution of 1:500 incubated at room temperature for 1.5 hours.