

For Research Use Only

# PKC Delta Polyclonal antibody

Catalog Number: 14188-1-AP

Featured Product

10 Publications



## Basic Information

**Catalog Number:**

14188-1-AP

**Size:**

350 µg/ml

**Source:**

Rabbit

**Isotype:**

IgG

**Immunogen Catalog Number:**

AG5473

**GenBank Accession Number:**

BC043350

**GeneID (NCBI):**

5580

**UNIPROT ID:**

Q05655

**Full Name:**

protein kinase C, delta

**Calculated MW:**

78 kDa

**Observed MW:**

70-80 kDa

**Purification Method:**

Antigen affinity purification

**Recommended Dilutions:**

WB 1:1000-1:4000

IP 0.5-4.0 µg for 1.0-3.0 mg of total protein lysate

IF 1:50-1:500

## Applications

**Tested Applications:**

IF/ICC, IP, WB, ELISA

**Cited Applications:**

WB, IF, IHC

**Species Specificity:**

human, mouse, rat

**Cited Species:**

human, rat, mouse

**Positive Controls:**

**WB:** NIH/3T3 cells, C6 cells, mouse brain tissue, rat brain tissue

**IP:** mouse brain tissue,

**IF:** Saos-2 cells, A431 cells, HeLa cells

## Background Information

PKC Delta is a member of the protein kinase C family of serine- and threonine-specific protein kinases. The encoded protein is activated by diacylglycerol and is both a tumor suppressor and a positive regulator of cell cycle progression. Also, this protein can positively or negatively regulate apoptosis. Defects in this gene are a cause of autoimmune lymphoproliferative syndrom.

## Notable Publications

Author	Pubmed ID	Journal	Application
Chunmin Ma	34861246	Chem Biol Interact	WB
Lingli Sun	35302141	Food Funct	WB,IHC
Hongyi Zhou	31185001	JCI Insight	WB

## Storage

**Storage:**

Store at -20°C. Stable for one year after shipment.

**Storage Buffer:**

PBS with 0.02% sodium azide and 50% glycerol pH 7.3.

Aliquoting is unnecessary for -20°C storage

For technical support and original validation data for this product please contact:

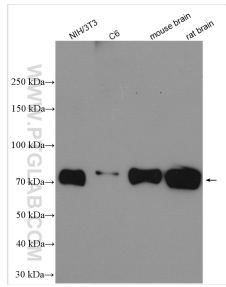
T: 4006900926

E: Proteintech-CN@ptglab.com

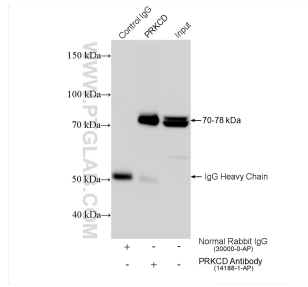
W: ptgcn.com

This product is exclusively available under Proteintech Group brand and is not available to purchase from any other manufacturer.

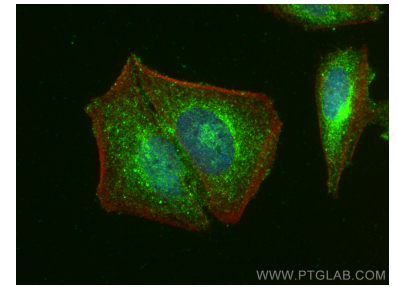
## Selected Validation Data



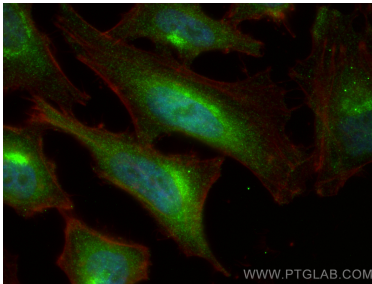
Various lysates were subjected to SDS PAGE followed by western blot with 14188-1-AP (PKC Delta antibody) at dilution of 1:2000 incubated at room temperature for 1.5 hours.



IP result of anti-PKC Delta (IP:14188-1-AP, 4ug; Detection:14188-1-AP 1:2000) with mouse brain tissue lysate 1280 ug.



Immunofluorescent analysis of (4% PFA) fixed Saos-2 cells using PKC Delta antibody (14188-1-AP) at dilution of 1:200 and CoraLite@488-Conjugated AffiniPure Goat Anti-Rabbit IgG(H+L), CL594-phalloidin (red).



Immunofluorescent analysis of (4% PFA) fixed HeLa cells using PKC Delta antibody (14188-1-AP) at dilution of 1:200 and CoraLite@488-Conjugated AffiniPure Goat Anti-Rabbit IgG(H+L), CL594-phalloidin (red).