

For Research Use Only

SMC3 Polyclonal antibody, PBS Only

Catalog Number:14185-1-PBS



Basic Information

Catalog Number:

14185-1-PBS

Source:

Rabbit

Isotype:

IgG

Immunogen Catalog Number:

AG5440

GenBank Accession Number:

BC047324

GeneID (NCBI):

9126

UNIPROT ID:

Q9UQE7

Full Name:

structural maintenance of
chromosomes 3

Calculated MW:

142 kDa

Observed MW:

140 kDa

Purification Method:

Antigen affinity purification

Applications

Tested Applications:

WB, IHC, IF/ICC, ELISA

Species Specificity:

human, mouse, rat

Background Information

Storage

Storage:

Store at -80°C.

The product is shipped with ice packs. Upon receipt, store it immediately at -80°C

Storage Buffer:

PBS only, pH7.3

For technical support and original validation data for this product please contact:

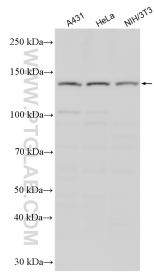
T: 4006900926

E: Proteintech-CN@ptglab.com

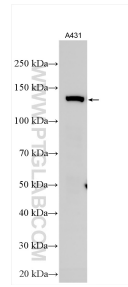
W: ptgcn.com

This product is exclusively available under Proteintech Group brand and is not available to purchase from any other manufacturer.

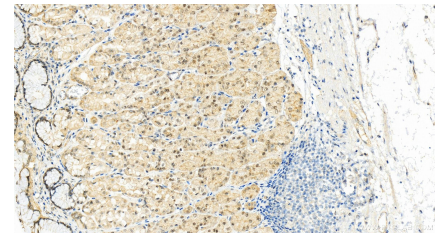
Selected Validation Data



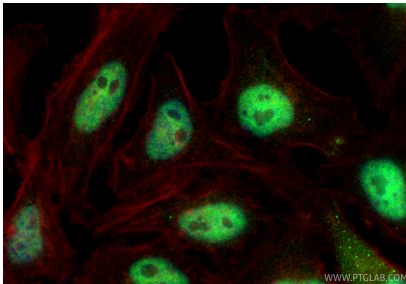
Various lysates were subjected to SDS PAGE followed by western blot with 14185-1-AP (SMC3 antibody) at dilution of 1:800 incubated at room temperature for 1.5 hours. This data was developed using the same antibody clone with 14185-1-PBS in a different storage buffer formulation.



Various lysates were subjected to SDS PAGE followed by western blot with 14185-1-AP (SMC3 antibody) at dilution of 1:2000 incubated at room temperature for 1.5 hours. This data was developed using the same antibody clone with 14185-1-PBS in a different storage buffer formulation.



Immunohistochemical analysis of paraffin-embedded human stomach tissue slide using 14185-1-AP (SMC3 antibody) at dilution of 1:200 (under 20x lens). Heat mediated antigen retrieval with Tris-EDTA buffer (pH 9.0). This data was developed using the same antibody clone with 14185-1-PBS in a different storage buffer formulation.



Immunofluorescent analysis of (4% PFA) fixed HeLa cells using SMC3 antibody (14185-1-AP) at dilution of 1:400 and Coralite@488-Conjugated Goat Anti-Rabbit IgG(H+L) (SA00013-2), CL594-Phalloidin (red). This data was developed using the same antibody clone with 14185-1-PBS in a different storage buffer formulation.