

For Research Use Only

SMC3 Polyclonal antibody

Catalog Number: 14185-1-AP **2 Publications**



Basic Information

Catalog Number:

14185-1-AP

Size:

200 µg/ml

Source:

Rabbit

Isotype:

IgG

Immunogen Catalog Number:

AG5440

GenBank Accession Number:

BC047324

GeneID (NCBI):

9126

UNIPROT ID:

Q9UQE7

Full Name:

structural maintenance of chromosomes 3

Calculated MW:

142 kDa

Observed MW:

140 kDa

Purification Method:

Antigen affinity purification

Recommended Dilutions:

WB 1:500-1:2400

IF 1:50-1:500

Applications

Tested Applications:

FC, IF/ICC, WB, ELISA

Cited Applications:

WB, CoIP

Species Specificity:

human, mouse, rat

Cited Species:

human

Positive Controls:

WB : HeLa cells, Jurkat cells, mouse brain tissue

IF : HeLa cells,

Background Information

Notable Publications

| Author | Pubmed ID | Journal | Application |
|--------------------|-----------|-----------------|-------------|
| Marianna Naki | 35563580 | Int J Mol Sci | CoIP |
| Olga Gourdomichali | 35205152 | Biology (Basel) | WB |

Storage

Storage:

Store at -20°C. Stable for one year after shipment.

Storage Buffer:

PBS with 0.02% sodium azide and 50% glycerol pH 7.3.

Aliquoting is unnecessary for -20°C storage

For technical support and original validation data for this product please contact:

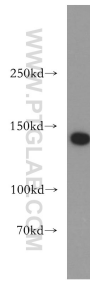
T: 4006900926

E: Proteintech-CN@ptglab.com

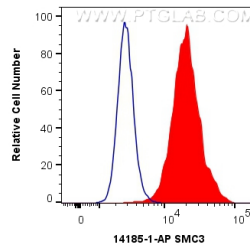
W: ptgcn.com

This product is exclusively available under Proteintech Group brand and is not available to purchase from any other manufacturer.

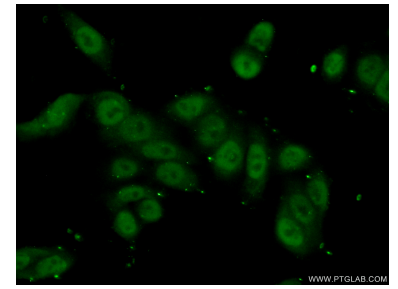
Selected Validation Data



HeLa cells were subjected to SDS PAGE followed by western blot with 14185-1-AP (SMC3 antibody) at dilution of 1:300 incubated at room temperature for 1.5 hours.



1×10^6 HeLa cells were intracellularly stained with 0.4 μ g Anti-Human SMC3 (14185-1-AP) and CoraLite® 488-Conjugated AffiniPure Goat Anti-Rabbit IgG(H+L) at dilution 1:1000 (red), or 0.4 μ g Control Antibody. Cells were fixed with 4% PFA and permeabilized with Flow Cytometry Perm Buffer (PF00011-C).



Immunofluorescent analysis of (10% Formaldehyde) fixed HeLa cells using 14185-1-AP (SMC3 antibody) at dilution of 1:50 and Alexa Fluor 488-conjugated AffiniPure Goat Anti-Rabbit IgG(H+L).