

For Research Use Only

# PTH2R Polyclonal antibody

Catalog Number: 14166-1-AP



## Basic Information

**Catalog Number:**

14166-1-AP

**Size:**

260 ug/ml

**Source:**

Rabbit

**Isotype:**

IgG

**Immunogen Catalog Number:**

AG5364

**GenBank Accession Number:**

BC036811

**GeneID (NCBI):**

5746

**UNIPROT ID:**

P49190

**Full Name:**

parathyroid hormone 2 receptor

**Calculated MW:**

550 aa, 62 kDa

**Observed MW:**

62-66 kDa

**Purification Method:**

Antigen affinity purification

**Recommended Dilutions:**

WB 1:500-1:1000

IHC 1:20-1:200

## Applications

**Tested Applications:**

WB, IHC, ELISA

**Species Specificity:**

human, mouse, rat

**Note-IHC: suggested antigen retrieval with TE buffer pH 9.0; (\*) Alternatively, antigen retrieval may be performed with citrate buffer pH 6.0**

**Positive Controls:**

**WB :** L02 cells, BxPC-3 cells, human testis tissue, mouse liver tissue, mouse pancreas tissue, mouse testis tissue

**IHC :** human pancreas cancer tissue, human renal cell carcinoma tissue

## Background Information

### Storage

**Storage:**

Store at -20°C. Stable for one year after shipment.

**Storage Buffer:**

PBS with 0.02% sodium azide and 50% glycerol pH 7.3.

Aliquoting is unnecessary for -20°C storage

For technical support and original validation data for this product please contact:

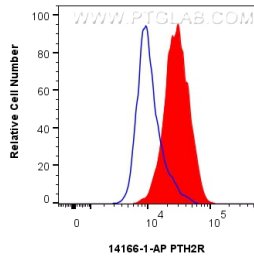
T: 4006900926

E: [Proteintech-CN@ptglab.com](mailto:Proteintech-CN@ptglab.com)

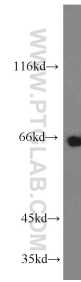
W: [ptgcn.com](http://ptgcn.com)

This product is exclusively available under Proteintech Group brand and is not available to purchase from any other manufacturer.

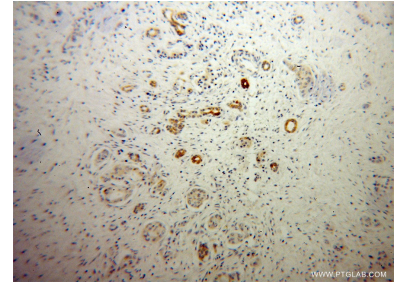
## Selected Validation Data



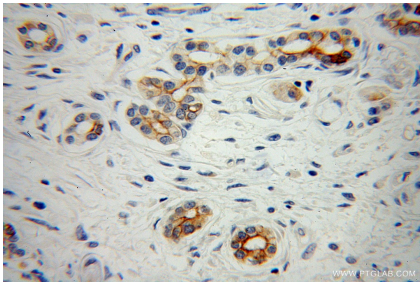
1x10<sup>6</sup> BxPC-3 cells were intracellularly stained with 0.4 ug PTH2R Polyclonal antibody (14166-1-AP) and CoraLite®488-Conjugated Goat Anti-Rabbit IgG(H+L) (SA00013-2)(red), or 0.4 ug Rabbit IgG control Rabbit PolyAb (30000-0-AP) (blue). Cells were fixed with 4% PFA and permeabilized with Flow Cytometry Perm Buffer (PF00011-C).



L02 cells were subjected to SDS PAGE followed by western blot with 14166-1-AP (PTH2R antibody) at dilution of 1:500 incubated at room temperature for 1.5 hours.



Immunohistochemical analysis of paraffin-embedded human pancreas cancer using 14166-1-AP (PTH2R antibody) at dilution of 1:50 (under 10x lens).



Immunohistochemical analysis of paraffin-embedded human pancreas cancer using 14166-1-AP (PTH2R antibody) at dilution of 1:50 (under 40x lens).