

MIPOL1 Polyclonal antibody

Catalog Number: 14158-1-AP

Basic Information

Catalog Number:

14158-1-AP

Size:

260 µg/ml

Source:

Rabbit

Isotype:

IgG

Immunogen Catalog Number:

AG5340

GenBank Accession Number:

BC035870

GeneID (NCBI):

145282

UNIPROT ID:

Q8TD10

Full Name:

mirror-image polydactyly 1

Calculated MW:

442 aa, 52 kDa

Observed MW:

52 kDa

Purification Method:

Antigen affinity purification

Recommended Dilutions:

WB 1:500-1:1000

IHC 1:20-1:200

Applications

Tested Applications:

IHC, WB, ELISA

Species Specificity:

human

Note-IHC: suggested antigen retrieval with TE buffer pH 9.0; (*) Alternatively, antigen retrieval may be performed with citrate buffer pH 6.0

Positive Controls:

WB : HepG2 cells, human liver tissue

IHC : human liver cancer tissue,

Background Information

Storage

Storage:

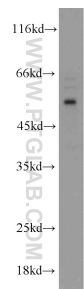
Store at -20°C. Stable for one year after shipment.

Storage Buffer:

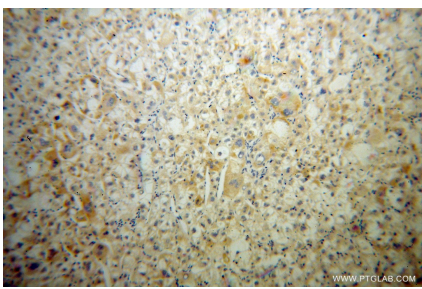
PBS with 0.02% sodium azide and 50% glycerol pH 7.3.

Aliquoting is unnecessary for -20°C storage

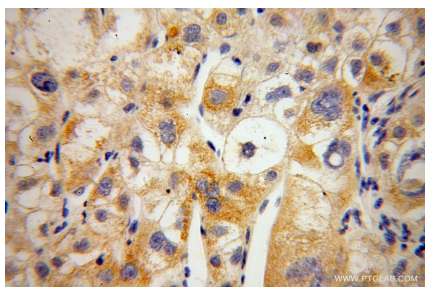
Selected Validation Data



HepG2 cells were subjected to SDS PAGE followed by western blot with 14158-1-AP (MIPOL1 antibody) at dilution of 1:800 incubated at room temperature for 1.5 hours.



Immunohistochemical analysis of paraffin-embedded human liver cancer using 14158-1-AP (MIPOL1 antibody) at dilution of 1:100 (under 10x lens).



Immunohistochemical analysis of paraffin-embedded human liver cancer using 14158-1-AP (MIPOL1 antibody) at dilution of 1:100 (under 40x lens).