

For Research Use Only

SLA2 Polyclonal antibody

Catalog Number: 14152-1-AP



Basic Information

Catalog Number:

14152-1-AP

Size:

450 ug/ml

Source:

Rabbit

Isotype:

IgG

Immunogen Catalog Number:

AG5334

GenBank Accession Number:

BC042041

GeneID (NCBI):

84174

UNIPROT ID:

Q9H6Q3

Full Name:

Src-like-adaptor 2

Calculated MW:

261 aa, 29 kDa

Observed MW:

28-30 kDa

Purification Method:

Antigen affinity purification

Recommended Dilutions:

WB 1:500-1:2000

Applications

Tested Applications:

ELISA

Species Specificity:

human

Positive Controls:

WB : human peripheral blood platelets,

Background Information

SLA2 is an adapter protein, which negatively regulates T-cell receptor (TCR) signaling. It inhibits T-cell antigen-receptor-induced activation of nuclear factor of activated T-cells and may act by linking signaling proteins such as ZAP70 with CBL, leading to a CBL-dependent degradation of signaling proteins (PMID: 11696592).

Storage

Storage:

Store at -20°C. Stable for one year after shipment.

Storage Buffer:

PBS with 0.02% sodium azide and 50% glycerol pH 7.3.

Aliquoting is unnecessary for -20°C storage

For technical support and original validation data for this product please contact:

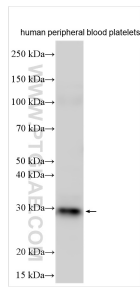
T: 4006900926

E: Proteintech-CN@ptglab.com

W: ptgcn.com

This product is exclusively available under Proteintech Group brand and is not available to purchase from any other manufacturer.

Selected Validation Data



Various lysates were subjected to SDS PAGE followed by western blot with 14152-1-AP (SLA2 antibody) at dilution of 1:1000 incubated at room temperature for 1.5 hours.