

For Research Use Only

ABT1 Polyclonal antibody

Catalog Number: 14148-1-AP **1 Publications**



Basic Information

Catalog Number: 14148-1-AP	GenBank Accession Number: BC066313	Purification Method: Antigen affinity purification
Size: 500 µg/ml	GeneID (NCBI): 29777	Recommended Dilutions: WB 1:200-1:1000 IHC 1:20-1:200 IF 1:50-1:500
Source: Rabbit	UNIPROT ID: Q9ULW3	
Isotype: IgG	Full Name: activator of basal transcription 1	
Immunogen Catalog Number: AG5317	Calculated MW: 31 kDa	
	Observed MW: 31-32 kDa	

Applications

Tested Applications: IF/ICC, IHC, WB, ELISA	Positive Controls: WB : mouse liver tissue, HeLa cells IHC : human brain tissue, IF : HeLa cells,
Cited Applications: WB	
Species Specificity: human, mouse, rat	
Cited Species: human	
Note-IHC: suggested antigen retrieval with TE buffer pH 9.0; (*) Alternatively, antigen retrieval may be performed with citrate buffer pH 6.0	

Background Information

Notable Publications

Author	Pubmed ID	Journal	Application
Gangadhar P Vadla	36480289	JCI Insight	WB

Storage

Storage:
Store at -20°C. Stable for one year after shipment.
Storage Buffer:
PBS with 0.02% sodium azide and 50% glycerol pH 7.3.
Aliquoting is unnecessary for -20°C storage

For technical support and original validation data for this product please contact:

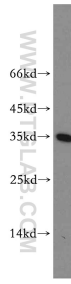
T: 4006900926

E: Proteintech-CN@ptglab.com

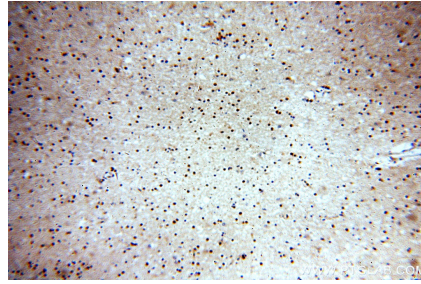
W: ptgcn.com

This product is exclusively available under Proteintech Group brand and is not available to purchase from any other manufacturer.

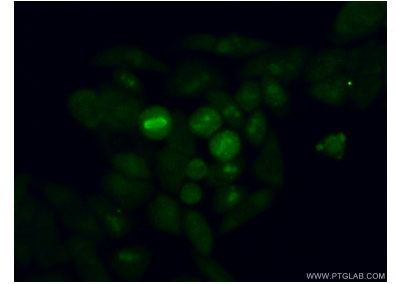
Selected Validation Data



mouse liver tissue were subjected to SDS PAGE followed by western blot with 14148-1-AP (ABT1 antibody) at dilution of 1:300 incubated at room temperature for 1.5 hours.



Immunohistochemical analysis of paraffin-embedded human brain using 14148-1-AP (ABT1 antibody) at dilution of 1:100 (under 10x lens).



Immunofluorescent analysis of (4% PFA) fixed HeLa cells using 14148-1-AP (ABT1 antibody) at dilution of 1:50 and Alexa Fluor 488-conjugated AffiniPure Goat Anti-Rabbit IgG(H+L).