

For Research Use Only

# LMX1A Polyclonal antibody

Catalog Number: 14144-1-AP



## Basic Information

Catalog Number:

14144-1-AP

Size:

700 µg/ml

Source:

Rabbit

Isotype:

IgG

Immunogen Catalog Number:

AG5311

GenBank Accession Number:

BC066353

GeneID (NCBI):

4009

UNIPROT ID:

Q8TE12

Full Name:

LMX homeobox transcription factor 1,  
alpha

Calculated MW:

43 kDa

Observed MW:

43 kDa

Purification Method:

Antigen affinity purification

Recommended Dilutions:

WB 1:500-1:1000

## Applications

Tested Applications:

WB, ELISA

Species Specificity:

mouse, rat

Positive Controls:

WB : mouse brain tissue, rat brain tissue

## Background Information

LMX1A is a transcription factor that positively regulates insulin gene transcription. LMX1A also plays a role in the development of dopamine-producing neurons during embryogenesis (PMID: 36381759). LMX1A has 2 isoforms with the molecular mass of 15 kDa (LMX1A-4AB) and 43 kDa (Isoform 1). LMX1A-4AB is expressed in testis. Isoform 1 of LMX1A is expressed in many tissues but not found in heart, liver, spleen and testis.

## Storage

Storage:

Store at -20°C. Stable for one year after shipment.

Storage Buffer:

PBS with 0.02% sodium azide and 50% glycerol pH 7.3.

Aliquoting is unnecessary for -20°C storage

For technical support and original validation data for this product please contact:

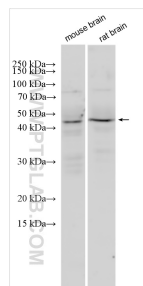
T: 4006900926

E: [Proteintech-CN@ptglab.com](mailto:Proteintech-CN@ptglab.com)

W: [ptgcn.com](http://ptgcn.com)

This product is exclusively available under Proteintech Group brand and is not available to purchase from any other manufacturer.

## Selected Validation Data



Various lysates were subjected to SDS PAGE followed by western blot with 14144-1-AP (LMX1A antibody) at dilution of 1:600 incubated at room temperature for 1.5 hours.