

For Research Use Only

# GFPT1 Polyclonal antibody, PBS Only

Catalog Number: 14132-1-PBS

Featured Product



## Basic Information

Catalog Number:

14132-1-PBS

Source:

Rabbit

Isotype:

IgG

Immunogen Catalog Number:

AG5312

GenBank Accession Number:

BC045641

GeneID (NCBI):

2673

UNIPROT ID:

Q06210

Full Name:

glutamine-fructose-6-phosphate  
transaminase 1

Calculated MW:

681 aa, 77 kDa

Observed MW:

77 kDa

Purification Method:

Antigen affinity purification

## Applications

Tested Applications:

WB, IHC, IF/ICC, IP, Indirect ELISA

Species Specificity:

human, mouse, rat

## Background Information

GFPT1 (glutamine-fructose-6-phosphate transaminase 1) catalyzes the transfer of an amino group from glutamine onto fructose-6-phosphate, yielding glucosamine-6-phosphate (GlcN-6-P) and glutamate. GFPT1 is the key enzyme of the hexosamine pathway and is required for critical events in neuromuscular transmission. Mutations of GFPT1 cause congenital myasthenic syndromes (CMS). (21310273, 25765662)

## Storage

Storage:

Store at -80°C.

**The product is shipped with ice packs. Upon receipt, store it immediately at -80°C**

Storage Buffer:

PBS only, pH7.3

For technical support and original validation data for this product please contact:

T: 4006900926

E: [Proteintech-CN@ptglab.com](mailto:Proteintech-CN@ptglab.com)

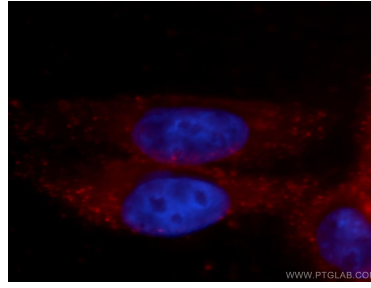
W: [ptgcn.com](http://ptgcn.com)

**This product is exclusively available under Proteintech Group brand and is not available to purchase from any other manufacturer.**

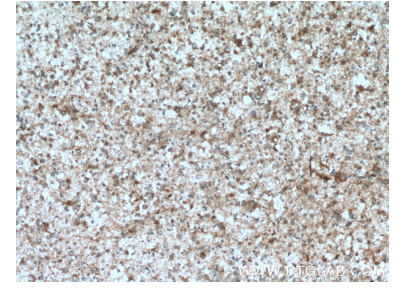
## Selected Validation Data



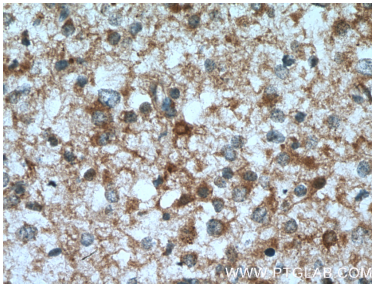
human skeletal muscle tissue were subjected to SDS PAGE followed by western blot with 14132-1-AP (GFPT1 antibody) at dilution of 1:500 incubated at room temperature for 1.5 hours. This data was developed using the same antibody clone with 14132-1-PBS in a different storage buffer formulation.



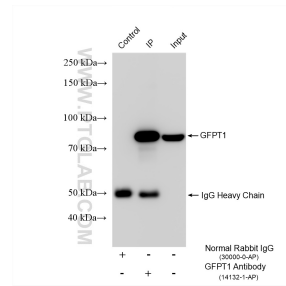
Immunofluorescent analysis of HepG2 cells, using GFPT1 antibody 14132-1-AP at 1:100 dilution and PE-labeled goat anti-rabbit IgG (red). Blue pseudocolor = DAPI (fluorescent DNA dye). This data was developed using the same antibody clone with 14132-1-PBS in a different storage buffer formulation.



Immunohistochemical analysis of paraffin-embedded human gliomas tissue slide using 14132-1-AP (GFPT1 antibody) at dilution of 1:200 (under 10x lens. Heat mediated antigen retrieval with Tris-EDTA buffer (pH 9.0). This data was developed using the same antibody clone with 14132-1-PBS in a different storage buffer formulation.



Immunohistochemical analysis of paraffin-embedded human gliomas tissue slide using 14132-1-AP (GFPT1 antibody) at dilution of 1:200 (under 40x lens. Heat mediated antigen retrieval with Tris-EDTA buffer (pH 9.0). This data was developed using the same antibody clone with 14132-1-PBS in a different storage buffer formulation.



IP result of anti-GFPT1 (IP:14132-1-AP, 4ug; Detection:14132-1-AP 1:3000) with HepG2 cells lysate 1600 ug. This data was developed using the same antibody clone with 14132-1-PBS in a different storage buffer formulation.