

For Research Use Only

GFPT1 Polyclonal antibody

Catalog Number: 14132-1-AP

Featured Product

25 Publications



Basic Information

Catalog Number:

14132-1-AP

Size:

300 µg/ml

Source:

Rabbit

Isotype:

IgG

Immunogen Catalog Number:

AG5312

GenBank Accession Number:

BC045641

GeneID (NCBI):

2673

UNIPROT ID:

Q06210

Full Name:

glutamine-fructose-6-phosphate
transaminase 1

Calculated MW:

681 aa, 77 kDa

Observed MW:

77 kDa

Purification Method:

Antigen affinity purification

Recommended Dilutions:

WB 1:500-1:1000

IHC 1:50-1:500

IF 1:20-1:200

Applications

Tested Applications:

IF/ICC, IHC, WB, ELISA

Cited Applications:

CoIP, IF, IHC, IP, WB

Species Specificity:

human, mouse, rat

Cited Species:

human, rat, mouse, zebrafish

Note-IHC: suggested antigen retrieval with TE buffer pH 9.0; (*) Alternatively, antigen retrieval may be performed with citrate buffer pH 6.0

Positive Controls:

WB: human skeletal muscle tissue, HepG2 cells

IHC: human gliomas tissue, human hepatocirrhosis tissue

IF: HepG2 cells,

Background Information

GFPT1 (glutamine-fructose-6-phosphate transaminase 1) catalyzes the transfer of an amino group from glutamine onto fructose-6-phosphate, yielding glucosamine-6-phosphate (GlcN-6-P) and glutamate. GFPT1 is the key enzyme of the hexosamine pathway and is required for critical events in neuromuscular transmission. Mutations of GFPT1 cause congenital myasthenic syndromes (CMS). (21310273, 25765662)

Notable Publications

Author	Pubmed ID	Journal	Application
Tanjing Song	34551297	Cell Rep	WB
Yong Huang	32938225	Am J Physiol Cell Physiol	WB
Weiwei Dai	30254013	Biochim Biophys Acta Mol Basis Dis	WB

Storage

Storage:

Store at -20°C. Stable for one year after shipment.

Storage Buffer:

PBS with 0.02% sodium azide and 50% glycerol pH 7.3.

Aliquoting is unnecessary for -20°C storage

For technical support and original validation data for this product please contact:

T: 4006900926

E: Proteintech-CN@ptglab.com

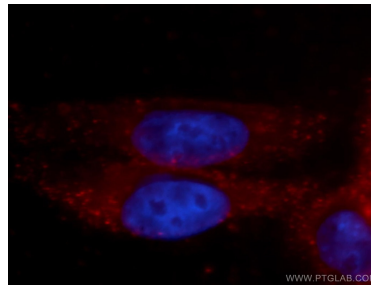
W: ptgcn.com

This product is exclusively available under Proteintech Group brand and is not available to purchase from any other manufacturer.

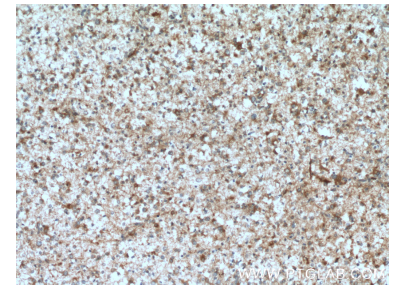
Selected Validation Data



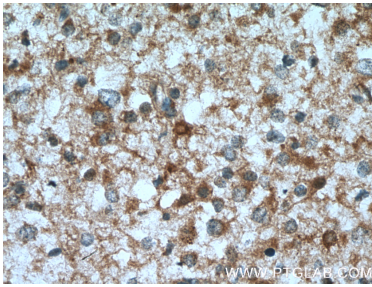
human skeletal muscle tissue were subjected to SDS PAGE followed by western blot with 14132-1-AP (GFPT1 antibody) at dilution of 1:500 incubated at room temperature for 1.5 hours.



Immunofluorescent analysis of HepG2 cells, using GFPT1 antibody 14132-1-AP at 1:100 dilution and PE-labeled goat anti-rabbit IgG (red). Blue pseudocolor = DAPI (fluorescent DNA dye).



Immunohistochemical analysis of paraffin-embedded human gliomas tissue slide using 14132-1-AP (GFPT1 antibody) at dilution of 1:200 (under 10x lens. Heat mediated antigen retrieval with Tris-EDTA buffer (pH 9.0).



Immunohistochemical analysis of paraffin-embedded human gliomas tissue slide using 14132-1-AP (GFPT1 antibody) at dilution of 1:200 (under 40x lens. Heat mediated antigen retrieval with Tris-EDTA buffer (pH 9.0).