

For Research Use Only

ASPH Polyclonal antibody

Catalog Number: 14116-1-AP

Featured Product

4 Publications



Basic Information

Catalog Number:

14116-1-AP

Size:

900 µg/ml

Source:

Rabbit

Isotype:

IgG

Immunogen Catalog Number:

AG5265

GenBank Accession Number:

BC066929

GeneID (NCBI):

444

UNIPROT ID:

Q12797

Full Name:

aspartate beta-hydroxylase

Calculated MW:

86 kDa

Observed MW:

26 kDa

Purification Method:

Antigen affinity purification

Recommended Dilutions:

WB 1:200-1:1000

IHC 1:50-1:500

Applications

Tested Applications:

IHC, WB, ELISA

Cited Applications:

WB, IHC

Species Specificity:

human, mouse

Cited Species:

human, rat

Note-IHC: suggested antigen retrieval with TE buffer pH 9.0; (*) Alternatively, antigen retrieval may be performed with citrate buffer pH 6.0

Positive Controls:

WB : mouse brain tissue, A549 cells, human brain tissue

IHC : human kidney tissue,

Background Information

Aspartate-β-hydroxylase (ASPH; termed AAH in older literature) has been implicated in the cross-talk among all of these signaling pathways. Correspondingly, ASPH is expressed at high levels in many malignant neoplasms of different histogeneses. It has the 86-141 kDa bands (native and phosphorylated forms), cleavage products of 35-56 and 22-26 kDa. (PMID:27981247/PMID: 10956665)

Notable Publications

Author	Pubmed ID	Journal	Application
Yujiao Zhou	30116759	J Immunol Res	WB
Michael Babich	35252607	Heliyon	WB, IHC
Hongwu Meng	36758707	Biochem Pharmacol	WB

Storage

Storage:

Store at -20°C. Stable for one year after shipment.

Storage Buffer:

PBS with 0.02% sodium azide and 50% glycerol pH 7.3.

Aliquoting is unnecessary for -20°C storage

For technical support and original validation data for this product please contact:

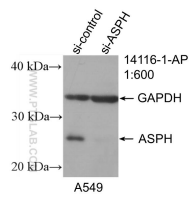
T: 4006900926

E: Proteintech-CN@ptglab.com

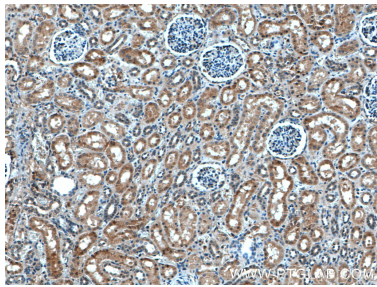
W: ptgcn.com

This product is exclusively available under Proteintech Group brand and is not available to purchase from any other manufacturer.

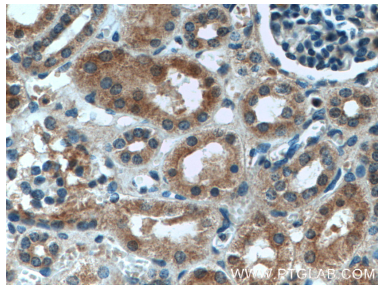
Selected Validation Data



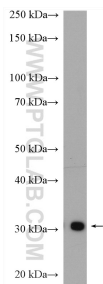
WB result of ASPH antibody (14116-1-AP; 1:600; incubated at room temperature for 1.5 hours) with sh-Control and sh-ASPH transfected A549 cells.



Immunohistochemical analysis of paraffin-embedded human kidney tissue slide using 14116-1-AP (ASPH antibody) at dilution of 1:200 (under 10x lens. Heat mediated antigen retrieval with Tris-EDTA buffer (pH 9.0).



Immunohistochemical analysis of paraffin-embedded human kidney tissue slide using 14116-1-AP (ASPH antibody) at dilution of 1:200 (under 40x lens. Heat mediated antigen retrieval with Tris-EDTA buffer (pH 9.0).



mouse brain tissue were subjected to SDS PAGE followed by western blot with 14116-1-AP (ASPH antibody) at dilution of 1:300 incubated at room temperature for 1.5 hours.