

# UBE2S Polyclonal antibody

Catalog Number: 14115-1-AP

Featured Product

12 Publications

## Basic Information

## Catalog Number:

14115-1-AP

## Concentration:

650 µg/ml

## Source:

Rabbit

## Isotype:

IgG

## Immunogen Catalog Number:

AG5264

## GenBank Accession Number:

BC066948

## GeneID (NCBI):

27338

## UNIPROT ID:

Q16763

## Full Name:

ubiquitin-conjugating enzyme E2S

## Calculated MW:

222 aa, 24 kDa

## Observed MW:

28 kDa

## Purification Method:

Antigen affinity purification

## Recommended Dilutions:

WB 1:1000-1:6000

IP 0.5-4.0 µg for 1.0-3.0 mg of total protein lysate

IHC 1:50-1:500

## Applications

## Tested Applications:

WB, IHC, IP, ELISA

## Cited Applications:

WB, IHC, IF, IP, CoIP

## Species Specificity:

human, mouse, rat

## Cited Species:

human, mouse

**Note-IHC: suggested antigen retrieval with TE buffer pH 9.0; (\*) Alternatively, antigen retrieval may be performed with citrate buffer pH 6.0**

## Positive Controls:

**WB**: MCF-7 cells, HEK-293T cells, MOLT-4 cells, PC-3 cells, HEK-293 cells, HeLa cells

**IP**: A2780 cells,

**IHC**: human liver cancer tissue, human breast cancer tissue, human skin tissue, human ovary tumor tissue

## Background Information

UBE2S (Ubiquitin-conjugating enzyme E2 S) is also named as E2EPF and belongs to the ubiquitin-conjugating enzyme family. It acts as an essential factor of the anaphase promoting complex/cyclosome (APC/C) and a cell cycle-regulated ubiquitin ligase that controls progression through mitosis. Overexpression of UBE2S can increase tumor cell proliferation, invasion, and metastasis through the VHL-HIF pathway (PMID:16819549).

## Notable Publications

Author	Pubmed ID	Journal	Application
Wenjing Hu	34535173	J Ovarian Res	WB, IHC
Shengmeng Peng	35637955	Int J Biol Sci	WB, IHC
Shusaku Yoshimura	28257844	Biochem Biophys Res Commun	WB, IHC

## Storage

## Storage:

Store at -20°C. Stable for one year after shipment.

## Storage Buffer:

PBS with 0.02% sodium azide and 50% glycerol pH 7.3.

Aliquoting is unnecessary for -20°C storage

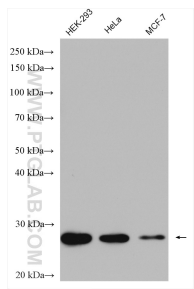
For technical support and original validation data for this product please contact:

T: 4006900926

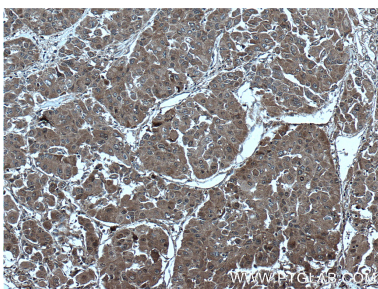
E: [Proteintech-CN@ptglab.com](mailto:Proteintech-CN@ptglab.com)W: [ptgcn.com](http://ptgcn.com)

**This product is exclusively available under Proteintech Group brand and is not available to purchase from any other manufacturer.**

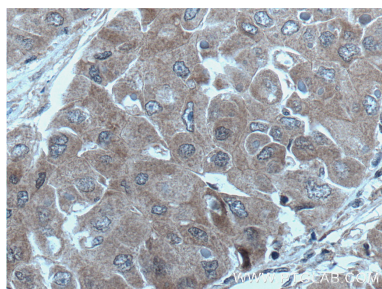
Selected Validation Data



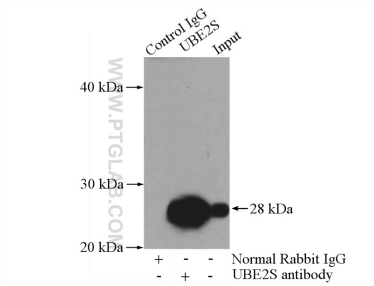
Various lysates were subjected to SDS PAGE followed by western blot with 14115-1-AP (UBE2S antibody) at dilution of 1:4000 incubated at room temperature for 1.5 hours.



Immunohistochemical analysis of paraffin-embedded human liver cancer tissue slide using 14115-1-AP (UBE2S antibody) at dilution of 1:200 (under 10x lens. Heat mediated antigen retrieval with Tris-EDTA buffer (pH 9.0).



Immunohistochemical analysis of paraffin-embedded human liver cancer tissue slide using 14115-1-AP (UBE2S antibody) at dilution of 1:200 (under 40x lens. Heat mediated antigen retrieval with Tris-EDTA buffer (pH 9.0).



IP result of anti-UBE2S (IP:14115-1-AP, 4ug; Detection:14115-1-AP 1:1000) with A2780 cells lysate 960ug.