

For Research Use Only

# SEPHS2 Polyclonal antibody

Catalog Number: 14109-1-AP

5 Publications



## Basic Information

Catalog Number:

14109-1-AP

Size:

500 µg/ml

Source:

Rabbit

Isotype:

IgG

Immunogen Catalog Number:

AG5255

GenBank Accession Number:

BC016643

GeneID (NCBI):

22928

UNIPROT ID:

Q99611

Full Name:

selenophosphate synthetase 2

Calculated MW:

47 kDa

Observed MW:

47-50 kDa

Purification Method:

Antigen affinity purification

Recommended Dilutions:

WB 1:1000-1:4000

IHC 1:50-1:500

## Applications

Tested Applications:

WB, IHC, ELISA

Cited Applications:

WB, IHC

Species Specificity:

human, mouse, rat

Cited Species:

human, mouse

**Note-IHC: suggested antigen retrieval with TE buffer pH 9.0; (\*) Alternatively, antigen retrieval may be performed with citrate buffer pH 6.0**

Positive Controls:

**WB** : NCI-H1299 cells, mouse pancreas tissue, mouse adipose tissue, rat liver tissue

**IHC** : human breast cancer tissue, human liver cancer tissue, mouse pancreas tissue

## Background Information

### Notable Publications

Author	Pubmed ID	Journal	Application
Junya Ito	39547222	Mol Cell	WB
Tobias Ackermann	39433871	EMBO Mol Med	WB
Hiroaki Fujita	38867112	Nat Struct Mol Biol	WB

## Storage

Storage:

Store at -20°C. Stable for one year after shipment.

Storage Buffer:

PBS with 0.02% sodium azide and 50% glycerol pH 7.3.

Aliquoting is unnecessary for -20°C storage

For technical support and original validation data for this product please contact:

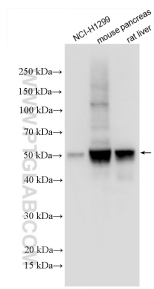
T: 4006900926

E: [Proteintech-CN@ptglab.com](mailto:Proteintech-CN@ptglab.com)

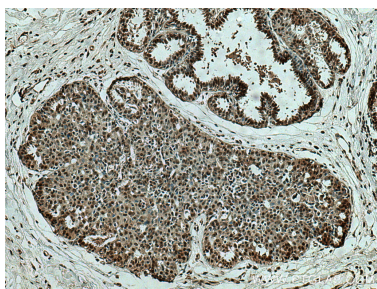
W: [ptgcn.com](http://ptgcn.com)

**This product is exclusively available under Proteintech Group brand and is not available to purchase from any other manufacturer.**

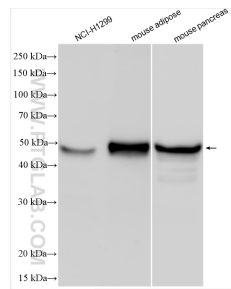
## Selected Validation Data



Various lysates were subjected to SDS PAGE followed by western blot with 14109-1-AP (SEPHS2 antibody) at dilution of 1:2000 incubated at room temperature for 1.5 hours.



Immunohistochemical analysis of paraffin-embedded human breast cancer tissue slide using 14109-1-AP (SEPHS2 antibody) at dilution of 1:200 (under 10x lens). Heat mediated antigen retrieval with Tris-EDTA buffer (pH 9.0).



Various lysates were subjected to SDS PAGE followed by western blot with 14109-1-AP (SEPHS2 antibody) at dilution of 1:4000 incubated at room temperature for 1.5 hours.