

NAPB Polyclonal antibody

Catalog Number: 14106-1-AP

Basic Information

Catalog Number:

14106-1-AP

Size:

500 µg/ml

Source:

Rabbit

Isotype:

IgG

Immunogen Catalog Number:

AG5239

GenBank Accession Number:

BC060840

GeneID (NCBI):

63908

UNIPROT ID:

Q9H115

Full Name:

N-ethylmaleimide-sensitive factor
attachment protein, beta

Calculated MW:

298 aa, 34 kDa

Observed MW:

34 kDa

Purification Method:

Antigen affinity purification

Recommended Dilutions:

WB 1:2000-1:10000

IP 0.5-4.0 µg for 1.0-3.0 mg of total
protein lysate

IHC 1:50-1:500

IF/ICC 1:20-1:200

Applications

Tested Applications:

WB, IHC, IF/ICC, IP, ELISA

Species Specificity:

human, mouse, rat

**Note-IHC: suggested antigen retrieval with
TE buffer pH 9.0; (*) Alternatively, antigen
retrieval may be performed with citrate
buffer pH 6.0**

Positive Controls:

WB : mouse brain tissue, rat brain tissue

IP : mouse brain tissue,

IHC : human gliomas tissue, mouse brain tissue

IF/ICC : HepG2 cells,

Background Information

Storage

Storage:

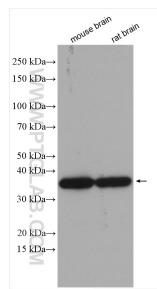
Store at -20°C. Stable for one year after shipment.

Storage Buffer:

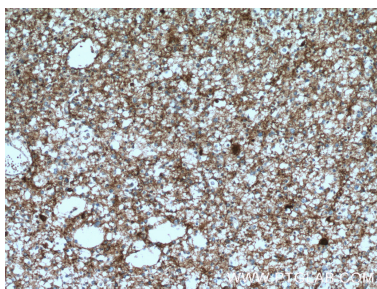
PBS with 0.02% sodium azide and 50% glycerol pH 7.3.

Aliquoting is unnecessary for -20°C storage

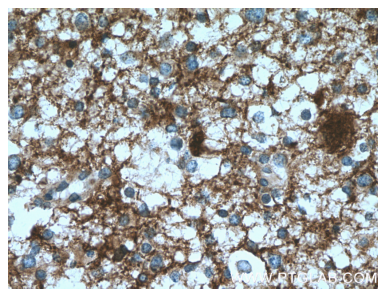
Selected Validation Data



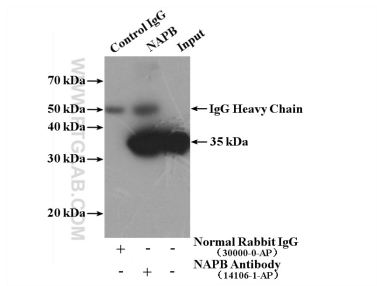
Various lysates were subjected to SDS PAGE followed by western blot with 14106-1-AP (NAPB antibody) at dilution of 1:5000 incubated at room temperature for 1.5 hours.



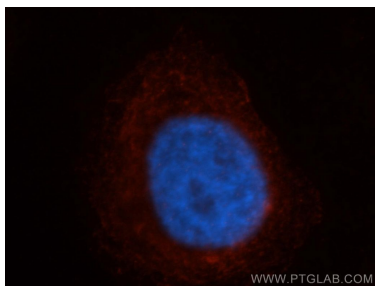
Immunohistochemical analysis of paraffin-embedded human gliomas tissue slide using 14106-1-AP (NAPB antibody) at dilution of 1:200 (under 10x lens. Heat mediated antigen retrieval with Tris-EDTA buffer (pH 9.0).



Immunohistochemical analysis of paraffin-embedded human gliomas tissue slide using 14106-1-AP (NAPB antibody) at dilution of 1:200 (under 40x lens. Heat mediated antigen retrieval with Tris-EDTA buffer (pH 9.0).



IP result of anti-NAPB (IP:14106-1-AP, 4ug; Detection:14106-1-AP 1:1000) with mouse brain tissue lysate 4000ug.



Immunofluorescent analysis of HepG2 cells, using NAPB antibody 14106-1-AP at 1:50 dilution and Rhodamine-labeled goat anti-rabbit IgG (red). Blue pseudocolor = DAPI (fluorescent DNA dye).