

# DOK2 Polyclonal antibody

Catalog Number: 14087-1-AP

1 Publications

## Basic Information

## Catalog Number:

14087-1-AP

## Size:

1000 µg/ml

## Source:

Rabbit

## Isotype:

IgG

## Immunogen Catalog Number:

AG5218

## GenBank Accession Number:

BC032623

## GeneID (NCBI):

9046

## UNIPROT ID:

O60496

## Full Name:

docking protein 2, 56kDa

## Calculated MW:

412 aa, 45 kDa

## Observed MW:

56 kDa

## Purification Method:

Antigen affinity purification

## Recommended Dilutions:

WB 1:500-1:2400

IHC 1:20-1:200

## Applications

## Tested Applications:

IHC, WB, ELISA

## Cited Applications:

IHC

## Species Specificity:

human, mouse, rat

## Cited Species:

human

**Note-IHC: suggested antigen retrieval with TE buffer pH 9.0; (\*) Alternatively, antigen retrieval may be performed with citrate buffer pH 6.0**

## Positive Controls:

WB : Jurkat cells,

IHC : human lymphoma tissue,

## Background Information

Docking protein 2 (Dok2) is an adapter protein which is involved in hematopoiesis. Dok2 is able to control Klf1 expression by transcriptional regulation through directly binding to its promoter region (PMID: 25075100).

## Notable Publications

Author	Pubmed ID	Journal	Application
Tomoko Miyata-Takata	30102799	Histopathology	IHC

## Storage

## Storage:

Store at -20°C. Stable for one year after shipment.

## Storage Buffer:

PBS with 0.02% sodium azide and 50% glycerol pH 7.3.

Aliquoting is unnecessary for -20°C storage

For technical support and original validation data for this product please contact:

T: 4006900926

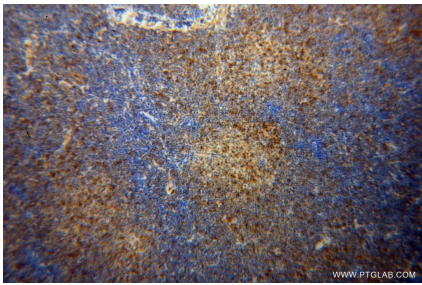
E: [Proteintech-CN@ptglab.com](mailto:Proteintech-CN@ptglab.com)W: [ptgcn.com](http://ptgcn.com)

This product is exclusively available under Proteintech Group brand and is not available to purchase from any other manufacturer.

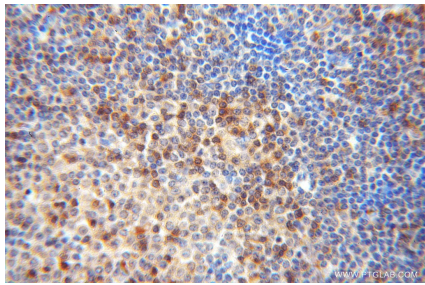
## Selected Validation Data



Jurkat cells were subjected to SDS PAGE followed by western blot with 14087-1-AP (DOK2 antibody) at dilution of 1:1000 incubated at room temperature for 1.5 hours.



Immunohistochemical analysis of paraffin-embedded human lymphoma using 14087-1-AP (DOK2 antibody) at dilution of 1:100 (under 10x lens).



Immunohistochemical analysis of paraffin-embedded human lymphoma using 14087-1-AP (DOK2 antibody) at dilution of 1:100 (under 40x lens).