

# GNL1 Polyclonal antibody

Catalog Number: 14078-1-AP

1 Publications

## Basic Information

## Catalog Number:

14078-1-AP

## Size:

350 µg/ml

## Source:

Rabbit

## Isotype:

IgG

## Immunogen Catalog Number:

AG5203

## GenBank Accession Number:

BC018366

## GeneID (NCBI):

2794

## UNIPROT ID:

P36915

## Full Name:

guanine nucleotide binding protein-like 1

## Calculated MW:

607 aa, 69 kDa

## Observed MW:

69 kDa

## Purification Method:

Antigen affinity purification

## Recommended Dilutions:

WB 1:2000-1:12000

IHC 1:20-1:200

IF/ICC 1:200-1:800

## Applications

## Tested Applications:

WB, IHC, IF/ICC, ELISA

## Cited Applications:

WB

## Species Specificity:

human

## Cited Species:

human

**Note-IHC: suggested antigen retrieval with TE buffer pH 9.0; (\*) Alternatively, antigen retrieval may be performed with citrate buffer pH 6.0**

## Positive Controls:

WB : HeLa cells, Jurkat cells, Raji cells, U-937 cells, K-562 cells, MCF-7 cells

IHC : human heart tissue, human skin tissue

IF/ICC : MCF-7 cells,

## Background Information

Guanine nucleotide-binding protein-like 1 (GNL1), also known as HSR1, belongs to HSR1\_MMR1 subfamily of nucleolar GTPases. It encodes 607 amino acids with a molecular mass of 69 kDa and contains basic amino acids rich N-terminus, acidic amino acids rich C-terminus and proline rich-domains. GNL1 plays a critical role in liver cell proliferation, but its function remains largely unknown (PMID: 18255255).

## Notable Publications

Author	Pubmed ID	Journal	Application
Zewei Tu	33634092	Front Cell Dev Biol	WB

## Storage

## Storage:

Store at -20°C. Stable for one year after shipment.

## Storage Buffer:

PBS with 0.02% sodium azide and 50% glycerol pH 7.3.

Aliquoting is unnecessary for -20°C storage

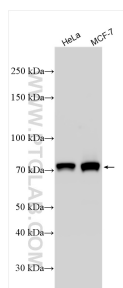
For technical support and original validation data for this product please contact:

T: 4006900926

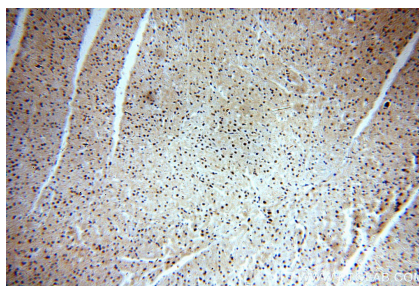
E: [Proteintech-CN@ptglab.com](mailto:Proteintech-CN@ptglab.com)W: [ptgcn.com](http://ptgcn.com)

This product is exclusively available under Proteintech Group brand and is not available to purchase from any other manufacturer.

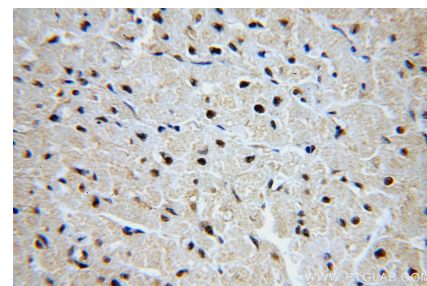
## Selected Validation Data



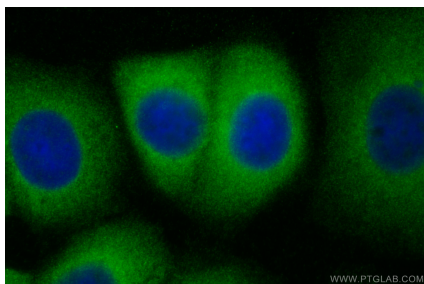
Various lysates were subjected to SDS PAGE followed by western blot with 14078-1-AP (GNL1 antibody) at dilution of 1:6000 incubated at room temperature for 1.5 hours.



Immunohistochemical analysis of paraffin-embedded human heart using 14078-1-AP (GNL1 antibody) at dilution of 1:100 (under 10x lens).



Immunohistochemical analysis of paraffin-embedded human heart using 14078-1-AP (GNL1 antibody) at dilution of 1:100 (under 40x lens).



Immunofluorescent analysis of (-20°C Methanol) fixed MCF-7 cells using GNL1 antibody (14078-1-AP) at dilution of 1:400 and CoraLite®488-Conjugated AffiniPure Goat Anti-Rabbit IgG(H+L).