

For Research Use Only

# CCP1 Polyclonal antibody

Catalog Number: 14067-1-AP

Featured Product

17 Publications



## Basic Information

### Catalog Number:

14067-1-AP

### Size:

300 µg/ml

### Source:

Rabbit

### Isotype:

IgG

### Immunogen Catalog Number:

AG5122

### GenBank Accession Number:

BC060815

### GeneID (NCBI):

23287

### UNIPROT ID:

Q9UPW5

### Full Name:

ATP/GTP binding protein 1

### Calculated MW:

138 kDa

### Observed MW:

138 kDa

### Purification Method:

Antigen affinity purification

### Recommended Dilutions:

WB 1:500-1:3000

IP 0.5-4.0 µg for 1.0-3.0 mg of total protein lysate

IHC 1:50-1:500

IF/ICC 1:10-1:100

## Applications

### Tested Applications:

WB, IHC, IF/ICC, IP, ELISA

### Cited Applications:

WB, IHC, IF, IP

### Species Specificity:

human, mouse

### Cited Species:

human, mouse, rat

### Positive Controls:

**WB** : mouse brain tissue, A549 cells, mouse testis tissue

**IP** : mouse testis tissue,

**IHC** : human testis tissue, human heart tissue, mouse testis tissue

**IF/ICC** : A549 cells,

**Note-IHC: suggested antigen retrieval with TE buffer pH 9.0; (\*) Alternatively, antigen retrieval may be performed with citrate buffer pH 6.0**

## Background Information

AGTPBP1, also known as CCP1 (cytosolic carboxy-peptidase 1), or Nna1, belongs to the peptidase M14 family. AGTPBP1 is a zinc carboxypeptidase that contains nuclear localization signals and an ATP/GTP-binding motif. Thus, it may contribute to nuclear signaling events in differentiating and regenerating neurons. It serves important functions in the nervous system, and AGTPBP1 mutations may cause Purkinje cell degeneration (pcd) phenotypes.

## Notable Publications

Author	Pubmed ID	Journal	Application
Stephen Gilmore-Hall	30337352	J Cell Biol	WB,IP
Vandana Shashi	30420557	EMBO J	WB,IF
Li Zhou	30225910	J Neurochem	WB

## Storage

### Storage:

Store at -20°C. Stable for one year after shipment.

### Storage Buffer:

PBS with 0.02% sodium azide and 50% glycerol pH 7.3.

Aliquoting is unnecessary for -20°C storage

For technical support and original validation data for this product please contact:

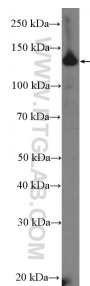
T: 4006900926

E: [Proteintech-CN@ptglab.com](mailto:Proteintech-CN@ptglab.com)

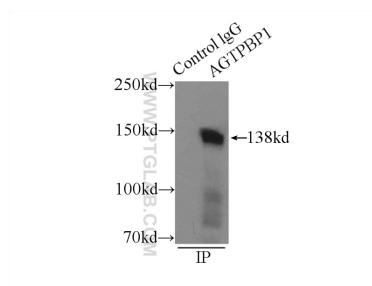
W: [ptgcn.com](http://ptgcn.com)

This product is exclusively available under Proteintech Group brand and is not available to purchase from any other manufacturer.

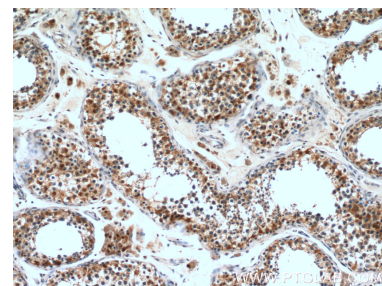
## Selected Validation Data



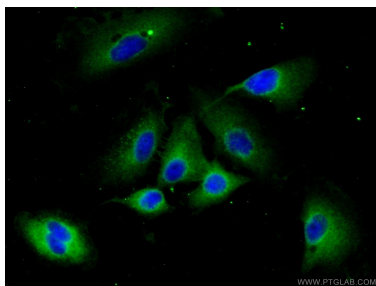
mouse brain tissue were subjected to SDS PAGE followed by western blot with 14067-1-AP (CCP1 Antibody) at dilution of 1:1500 incubated at room temperature for 1.5 hours.



IP result of anti-CCP1 (IP:14067-1-AP, 3ug; Detection:14067-1-AP 1:1000) with mouse testis tissue lysate 10000ug.



Immunohistochemical analysis of paraffin-embedded human testis tissue slide using 14067-1-AP (CCP1 Antibody) at dilution of 1:200 (under 10x lens).



Immunofluorescent analysis of (-20℃ Ethanol) fixed A549 cells using 14067-1-AP (CCP1 antibody) at dilution of 1:25 and Alexa Fluor 488-conjugated Goat Anti-Rabbit IgG(H+L).