

For Research Use Only

RGS7 Polyclonal antibody

Catalog Number: 14056-1-AP



Basic Information

Catalog Number: 14056-1-AP	GenBank Accession Number: BC022009	Purification Method: Antigen affinity purification
Size: 133 µg/ml	GeneID (NCBI): 6000	Recommended Dilutions: WB 1:500-1:1000
Source: Rabbit	UNIPROT ID: P49802	IHC 1:20-1:200
Isotype: IgG	Full Name: regulator of G-protein signaling 7	IF/ICC 1:20-1:200
Immunogen Catalog Number: AG4982	Calculated MW: 58 kDa	
	Observed MW: 62 kDa	

Applications

Tested Applications: WB, IHC, IF/ICC, ELISA	Positive Controls:
Species Specificity: human, mouse, rat	WB : SH-SY5Y cells,
Note-IHC: suggested antigen retrieval with TE buffer pH 9.0; (*) Alternatively, antigen retrieval may be performed with citrate buffer pH 6.0	IHC : human gliomas tissue,
	IF/ICC : SH-SY5Y cells,

Background Information

Storage

Storage:
Store at -20°C. Stable for one year after shipment.
Storage Buffer:
PBS with 0.02% sodium azide and 50% glycerol pH 7.3.
Aliquoting is unnecessary for -20°C storage

For technical support and original validation data for this product please contact:

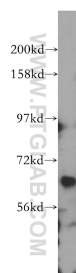
T: 4006900926

E: Proteintech-CN@ptglab.com

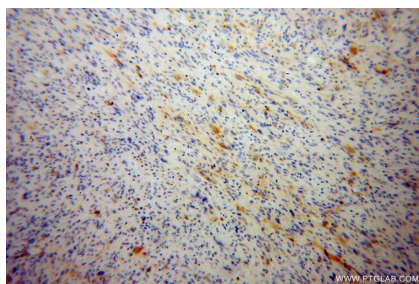
W: ptgcn.com

This product is exclusively available under Proteintech Group brand and is not available to purchase from any other manufacturer.

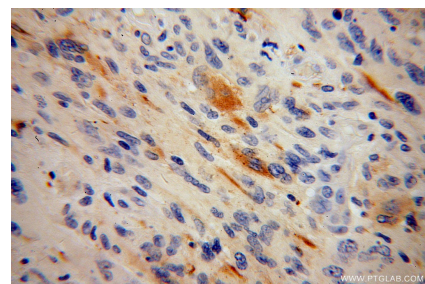
Selected Validation Data



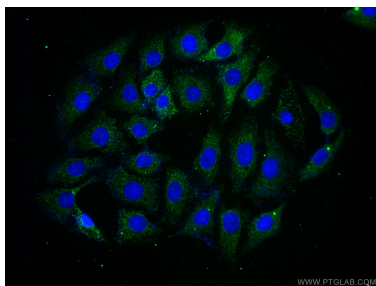
SH-SY5Y cells were subjected to SDS PAGE followed by western blot with 14056-1-AP (RGS7 antibody) at dilution of 1:500 incubated at room temperature for 1.5 hours.



Immunohistochemical analysis of paraffin-embedded human gliomas using 14056-1-AP (RGS7 antibody) at dilution of 1:50 (under 10x lens).



Immunohistochemical analysis of paraffin-embedded human gliomas using 14056-1-AP (RGS7 antibody) at dilution of 1:50 (under 40x lens).



Immunofluorescent analysis of (-20°C Ethanol) fixed SH-SY5Y cells using 14056-1-AP (RGS7 antibody) at dilution of 1:50 and Alexa Fluor 488-conjugated AffiniPure Goat Anti-Rabbit IgG(H+L).