

CTRP4 Polyclonal antibody

Catalog Number: 14023-1-AP

1 Publications

Basic Information

Catalog Number:

14023-1-AP

Size:

133 µg/ml

Source:

Rabbit

Isotype:

IgG

Immunogen Catalog Number:

AG5147

GenBank Accession Number:

BC035628

GeneID (NCBI):

114900

UNIPROT ID:

Q9BXJ3

Full Name:

C1q and tumor necrosis factor related protein 4

Calculated MW:

329 aa, 35 kDa

Observed MW:

45 kDa

Purification Method:

Antigen affinity purification

Recommended Dilutions:

WB 1:500-1:3000

IHC 1:20-1:200

IF/ICC 1:10-1:100

Applications

Tested Applications:

WB, IHC, IF/ICC, ELISA

Cited Applications:

IHC

Species Specificity:

human, mouse, rat

Cited Species:

human

Note-IHC: suggested antigen retrieval with TE buffer pH 9.0; (*) Alternatively, antigen retrieval may be performed with citrate buffer pH 6.0

Positive Controls:

WB : BxPC-3 cells,

IHC : human brain tissue,

IF/ICC : BxPC-3 cells,

Background Information

Notable Publications

Author	Pubmed ID	Journal	Application
Wangshu Xu	31317005	Ann Transl Med	IHC

Storage

Storage:

Store at -20°C. Stable for one year after shipment.

Storage Buffer:

PBS with 0.02% sodium azide and 50% glycerol pH 7.3.

Aliquoting is unnecessary for -20°C storage

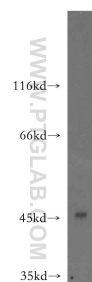
For technical support and original validation data for this product please contact:

T: 4006900926

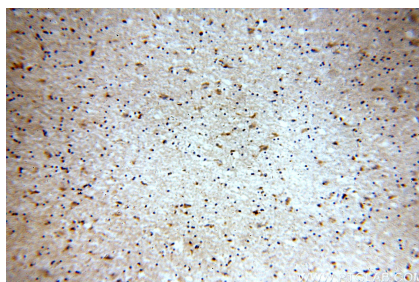
E: Proteintech-CN@ptglab.comW: ptgcn.com

This product is exclusively available under Proteintech Group brand and is not available to purchase from any other manufacturer.

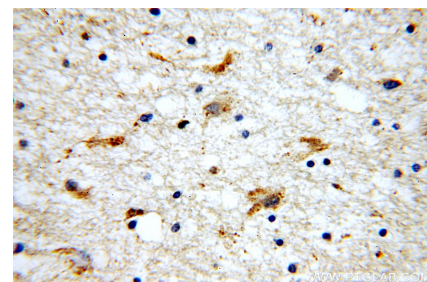
Selected Validation Data



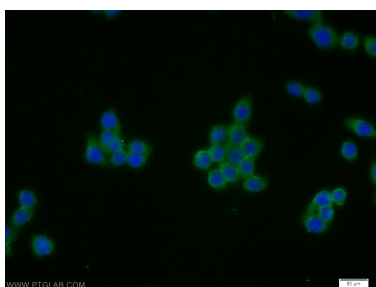
BxPC-3 cells were subjected to SDS PAGE followed by western blot with 14023-1-AP (CTRP4 antibody) at dilution of 1:1500 incubated at room temperature for 1.5 hours.



Immunohistochemical analysis of paraffin-embedded human brain using 14023-1-AP (CTRP4 antibody) at dilution of 1:100 (under 10x lens).



Immunohistochemical analysis of paraffin-embedded human brain using 14023-1-AP (CTRP4 antibody) at dilution of 1:100 (under 40x lens).



Immunofluorescent analysis of BxPC-3 cells using 14023-1-AP (CTRP4 antibody) at dilution of 1:25 and Alexa Fluor 488-conjugated AffiniPure Goat Anti-Rabbit IgG(H+L).