

For Research Use Only

PSMA8 Polyclonal antibody

Catalog Number: 14022-1-AP

Featured Product

4 Publications



Basic Information

Catalog Number:

14022-1-AP

Concentration:

600 ug/ml

Source:

Rabbit

Isotype:

IgG

Immunogen Catalog Number:

AG5138

GenBank Accession Number:

BC042820

GeneID (NCBI):

143471

UNIPROT ID:

Q8TAA3

Full Name:

proteasome (prosome, macropain)
subunit, alpha type, 8

Calculated MW:

29 kDa

Observed MW:

28 kDa

Purification Method:

Antigen affinity purification

Recommended Dilutions:

WB: 1:500-1:2000

IHC: 1:200-1:500

IF/ICC: 1:10-1:100

FC (Intra): 0.25 ug per 10⁶ cells in a
100 µl suspension

Applications

Tested Applications:

WB, IHC, IF/ICC, ELISA

Cited Applications:

WB, IF

Species Specificity:

human, mouse, rat

Cited Species:

mouse

**Note-IHC: suggested antigen retrieval with
TE buffer pH 9.0; (*) Alternatively, antigen
retrieval may be performed with citrate
buffer pH 6.0**

Positive Controls:

WB : Jurkat cells, K-562 cells, mouse thymus tissue,
HeLa cells, rat thymus tissue

IHC : human testis tissue, mouse testis tissue

IF/ICC : HepG2 cells,

FC (Intra) : HepG2 cells,

Background Information

Notable Publications

Author	Pubmed ID	Journal	Application
Zhiming Li	35736136	Nucleic Acids Res	WB
Laura Gómez-H	31437213	PLoS Genet	IF
Ting-Ting Han	39757018	Zool Res	

Storage

Storage:

Store at -20°C. Stable for one year after shipment.

Storage Buffer:

PBS with 0.02% sodium azide and 50% glycerol, pH7.3

Aliquoting is unnecessary for -20°C storage

For technical support and original validation data for this product please contact:

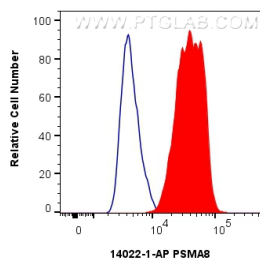
T: 4006900926

E: Proteintech-CN@ptglab.com

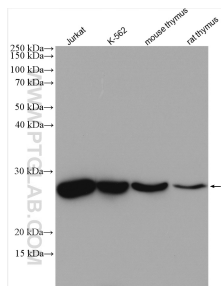
W: ptgcn.com

This product is exclusively available under Proteintech Group brand and is not available to purchase from any other manufacturer.

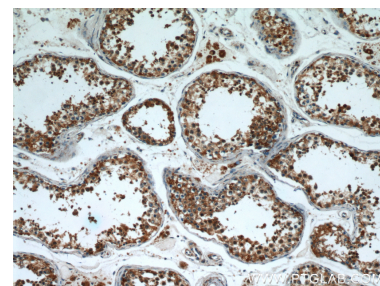
Selected Validation Data



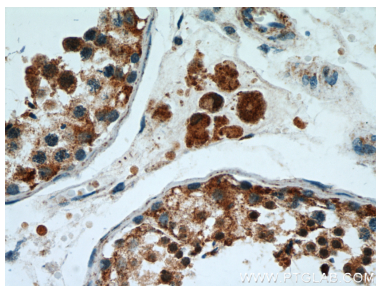
1x10⁶ HepG2 cells were intracellularly stained with 0.25 µg PSMA8 Polyclonal antibody (14022-1-AP) and CoraLite®488-Conjugated Goat Anti-Rabbit IgG(H+L) (SA00013-2)(red), or 0.25 µg Rabbit IgG control Rabbit PolyAb (30000-0-AP) (blue). Cells were fixed with 4% PFA and permeabilized with Flow Cytometry Perm Buffer (PF00011-C).



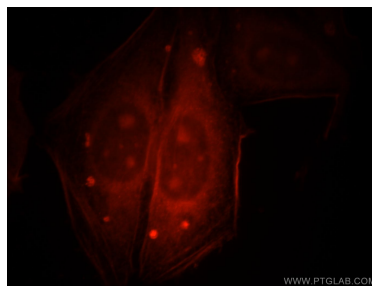
Various lysates were subjected to SDS PAGE followed by western blot with 14022-1-AP (PSMA8 antibody) at dilution of 1:1000 incubated at room temperature for 1.5 hours.



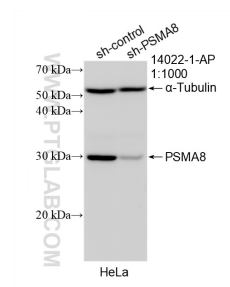
Immunohistochemical analysis of paraffin-embedded human testis using 14022-1-AP (PSMA8 antibody) at dilution of 1:50 (under 10x lens).



Immunohistochemical analysis of paraffin-embedded human testis using 14022-1-AP (PSMA8 antibody) at dilution of 1:50 (under 40x lens).



Immunofluorescent analysis of HepG2 cells, using PSMA8 antibody 14022-1-AP at 1:25 dilution and Rhodamine-labeled goat anti-rabbit IgG (red).



WB result of PSMA8 antibody (14022-1-AP; 1:1000; incubated at room temperature for 1.5 hours) with sh-Control and sh-PSMA8 transfected HeLa cells.