

For Research Use Only

# BACH1 Polyclonal antibody

Catalog Number: 14018-1-AP

Featured Product

47 Publications



## Basic Information

Catalog Number:

14018-1-AP

Concentration:

1000 µg/ml

Source:

Rabbit

Isotype:

IgG

Immunogen Catalog Number:

AG5128

GenBank Accession Number:

BC063307

GeneID (NCBI):

571

ENSEMBL Gene ID:

ENSG00000156273

UNIPROT ID:

O14867

Full Name:

BTB and CNC homology 1, basic  
leucine zipper transcription factor 1

Calculated MW:

82 kDa

Observed MW:

100-110 kDa

Purification Method:

Antigen affinity purification

Recommended Dilutions:

WB 1:5000-1:50000

IHC 1:750-1:3000

## Applications

Tested Applications:

WB, IHC, ELISA

Cited Applications:

WB, IHC, IF, ChIP

Species Specificity:

human

Cited Species:

human, mouse, rat

**Note-IHC: suggested antigen retrieval with  
TE buffer pH 9.0; (\*) Alternatively, antigen  
retrieval may be performed with citrate  
buffer pH 6.0**

Positive Controls:

WB : HEK-293 cells, MCF-7 cells, Raji cells, HeLa cells,  
Jurkat cells, K-562 cells

IHC : human cervical cancer tissue, human breast  
hyperplasia tissue, human breast cancer tissue

## Background Information

BTB and CNC homology 1, basic leucine zipper transcription factor 1 (BACH1) is a heme-regulated transcriptional regulator that acts as a repressor or activator and a member of the AP-1 superfamily. MafK belongs to the small Maf family that can function as transcriptional activators or repressors depending on the proteins with which they form heterodimers. BACH1 has crucial roles in both stress responses and transformation by H-RasV12. The molecular weight of expected mobility BACH1 is 100-110 kDa.

## Notable Publications

Author	Pubmed ID	Journal	Application
Jose A Godoy-Lugo	36142809	Int J Mol Sci	WB
Yuji Shiozaki	34517786	Autophagy	WB
Yubo Zhao	36064939	Cell Death Dis	WB

## Storage

Storage:

Store at -20°C. Stable for one year after shipment.

Storage Buffer:

PBS with 0.02% sodium azide and 50% glycerol pH 7.3.

Aliquoting is unnecessary for -20°C storage

For technical support and original validation data for this product please contact:

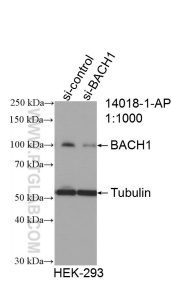
T: 4006900926

E: [Proteintech-CN@ptglab.com](mailto:Proteintech-CN@ptglab.com)

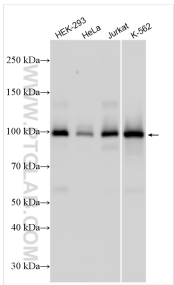
W: [ptgcn.com](http://ptgcn.com)

**This product is exclusively available under Proteintech Group brand and is not available to purchase from any other manufacturer.**

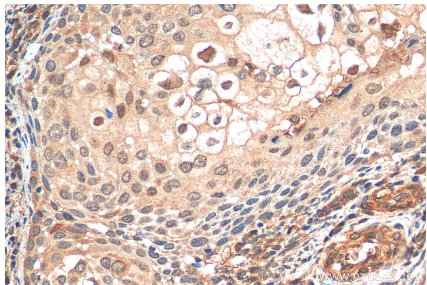
Selected Validation Data



WB result of BACH1 antibody (14018-1-AP; 1:1000; incubated at room temperature for 1.5 hours) with sh-Control and sh-BACH1 transfected HEK-293 cells.



Various lysates were subjected to SDS PAGE followed by western blot with 14018-1-AP (BACH1 antibody) at dilution of 1:15000 incubated at room temperature for 1.5 hours.



Immunohistochemical analysis of paraffin-embedded human cervical cancer tissue slide using 14018-1-AP (BACH1 antibody) at dilution of 1:1500 (under 40x lens). Heat mediated antigen retrieval with Tris-EDTA buffer (pH 9.0).