

For Research Use Only

STAG1 Polyclonal antibody

Catalog Number: 14015-1-AP **2 Publications**



Basic Information

Catalog Number: 14015-1-AP	GenBank Accession Number: BC064699	Purification Method: Antigen affinity purification
Size: 300 µg/ml	GeneID (NCBI): 10274	Recommended Dilutions: WB 1:500-1:3000
Source: Rabbit	UNIPROT ID: Q8WVM7	
Isotype: IgG	Full Name: stromal antigen 1	
Immunogen Catalog Number: AG5123	Calculated MW: 144 kDa	
	Observed MW: 155 kDa	

Applications

Tested Applications: WB, ELISA	Positive Controls: WB : HEK-293T cells, HeLa cells, human heart tissue, Raji cells, Jurkat cells, MCF-7 cells, NIH/3T3 cells
Cited Applications: WB	
Species Specificity: human, mouse	
Cited Species: human, rat	

Background Information

STAG1, also named as SCC3 homolog 1, is a 1258 amino acid protein, which belongs to the SCC3 family. STAG1 interacts directly with RAD21 in cohesin complex and localizes in nucleus. STAG1 is a Component of cohesin complex, which is required for the cohesion of sister chromatids after DNA replication. The cohesin complex apparently forms a large proteinaceous ring within which sister chromatids can be trapped. At anaphase, the complex is cleaved and dissociates from chromatin, allowing sister chromatids to segregate. The cohesin complex may also play a role in spindle pole assembly during mitosis. The calculate molecular weight of STAG1 is 144 kDa, but modified STAG1 is about 145-150 kDa.

Notable Publications

Author	Pubmed ID	Journal	Application
Gaoyang Chen	35361779	Bone Res	WB
Ena Oreskovic	35149558	Proc Natl Acad Sci U S A	WB

Storage

Storage:
Store at -20°C. Stable for one year after shipment.
Storage Buffer:
PBS with 0.02% sodium azide and 50% glycerol pH 7.3.
Aliquoting is unnecessary for -20°C storage

For technical support and original validation data for this product please contact:

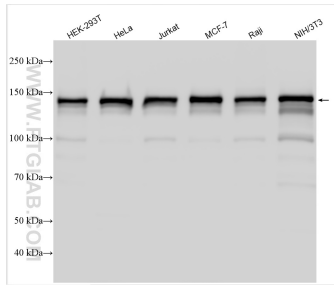
T: 4006900926

E: Proteintech-CN@ptglab.com

W: ptgcn.com

This product is exclusively available under Proteintech Group brand and is not available to purchase from any other manufacturer.

Selected Validation Data



Various lysates were subjected to SDS PAGE followed by western blot with 14015-1-AP (STAG1 antibody) at dilution of 1:1500 incubated at room temperature for 1.5 hours.