

For Research Use Only

SOX6 Polyclonal antibody

Catalog Number: 14010-1-AP

12 Publications



Basic Information

Catalog Number: 14010-1-AP	GenBank Accession Number: BC047064	Purification Method: Antigen affinity purification
Concentration: 600 µg/ml	GeneID (NCBI): 55553	Recommended Dilutions: WB: 1:1000-1:4000 IHC: 1:250-1:1000
Source: Rabbit	UNIPROT ID: P35712	
Isotype: IgG	Full Name: SRY (sex determining region Y)-box 6	
Immunogen Catalog Number: AG5111	Calculated MW: 92 kDa Observed MW: 90 kDa	

Applications

Tested Applications: WB, IHC, ELISA	Positive Controls: WB : U-251 cells, Jurkat cells, C6 cells IHC : rat testis tissue, mouse skin tissue
Cited Applications: WB, IHC, IF	
Species Specificity: human, rat	
Cited Species: human, mouse	

Note-IHC: suggested antigen retrieval with TE buffer pH 9.0; (*) Alternatively, antigen retrieval may be performed with citrate buffer pH 6.0

Background Information

The Sex-determining Region Y (SRY)-related high-mobilitygroup box 6 (SOX6) is a transcription factor that was discovered in 1990s while searching for Sry-related genes. SOX6 belongs to the subfamily D of SOX protein and can recognize the conserved sequence of "(A/T)(A/T)CAA(A/ T)G" within the transcriptional regulation region of the target gene with its HMG domain. Sox6 contains DNA binding domain and binds to the minor groove of DNA. The ability of SOX6 to interact with different proteins at different places and times, makes it an intricate protein with roles in multiple processes. SOX6 has been implicated in diabetic nephropathy, adipogenesis, cardiomyopathy, inflammatory bowel disease, and cancer. (PMID: 33230925)

Notable Publications

Author	Pubmed ID	Journal	Application
Zhen-Huan Jiang	31746345	Int J Mol Med	WB
Shi Shu	36181383	Nephrology (Carlton)	WB
Yuki Miyamoto	27876794	Nat Commun	WB

Storage

Storage:
Store at -20°C. Stable for one year after shipment.
Storage Buffer:
PBS with 0.02% sodium azide and 50% glycerol, pH7.3
Aliquoting is unnecessary for -20°C storage

For technical support and original validation data for this product please contact:

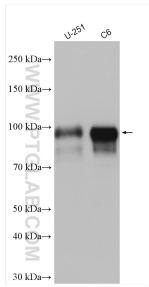
T: 4006900926

E: Proteintech-CN@ptglab.com

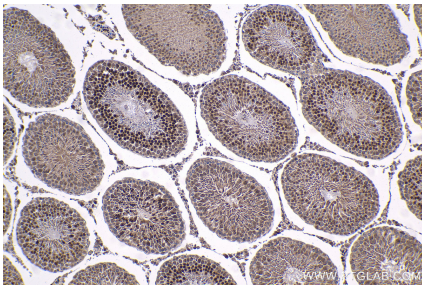
W: ptgcn.com

This product is exclusively available under Proteintech Group brand and is not available to purchase from any other manufacturer.

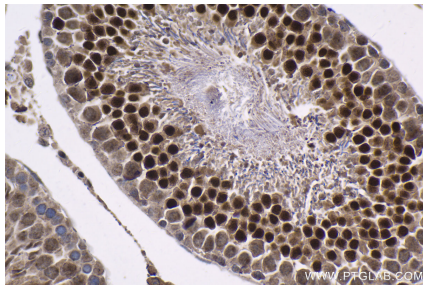
Selected Validation Data



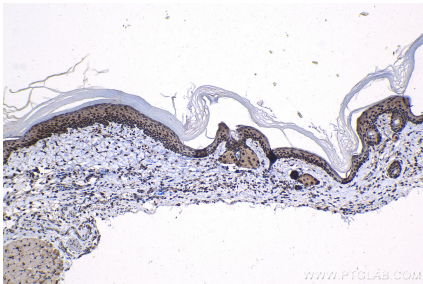
Various lysates were subjected to SDS PAGE followed by western blot with 14010-1-AP (SOX6 antibody) at dilution of 1:2000 incubated at room temperature for 1.5 hours.



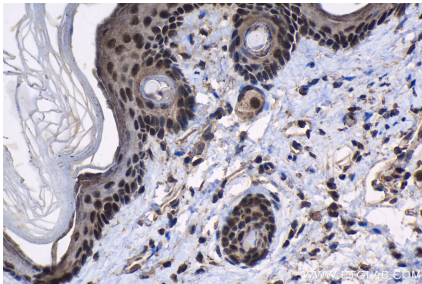
Immunohistochemical analysis of paraffin-embedded rat testis tissue slide using 14010-1-AP (SOX6 antibody) at dilution of 1:500 (under 10x lens). Heat mediated antigen retrieval with Tris-EDTA buffer (pH 9.0).



Immunohistochemical analysis of paraffin-embedded rat testis tissue slide using 14010-1-AP (SOX6 antibody) at dilution of 1:500 (under 40x lens). Heat mediated antigen retrieval with Tris-EDTA buffer (pH 9.0).



Immunohistochemical analysis of paraffin-embedded mouse skin tissue slide using 14010-1-AP (SOX6 antibody) at dilution of 1:500 (under 10x lens). Heat mediated antigen retrieval with Tris-EDTA buffer (pH 9.0).



Immunohistochemical analysis of paraffin-embedded mouse skin tissue slide using 14010-1-AP (SOX6 antibody) at dilution of 1:500 (under 40x lens). Heat mediated antigen retrieval with Tris-EDTA buffer (pH 9.0).