

For Research Use Only

# LEFTY2 Polyclonal antibody

Catalog Number: 13991-1-AP

4 Publications



## Basic Information

Catalog Number:

13991-1-AP

Concentration:

650 µg/ml

Source:

Rabbit

Isotype:

IgG

Immunogen Catalog Number:

AG5073

GenBank Accession Number:

BC035718

GeneID (NCBI):

7044

UNIPROT ID:

O00292

Full Name:

left-right determination factor 2

Calculated MW:

366 aa, 41 kDa

Observed MW:

34 kDa

Purification Method:

Antigen affinity purification

Recommended Dilutions:

WB: 1:500-1:1000

IHC: 1:20-1:200

IF/ICC: 1:20-1:200

## Applications

Tested Applications:

WB, IHC, IF/ICC, ELISA

Cited Applications:

WB, IHC, IF

Species Specificity:

human, mouse, rat

Cited Species:

human, mouse, rat

**Note-IHC: suggested antigen retrieval with TE buffer pH 9.0; (\*) Alternatively, antigen retrieval may be performed with citrate buffer pH 6.0**

Positive Controls:

WB : HeLa cells, mouse uterus tissue

IHC : human endometrial cancer tissue,

IF/ICC : HeLa cells,

## Background Information

### Notable Publications

Author	Pubmed ID	Journal	Application
Qianqian Gao	34737126	Dev Biol	IHC
Weilun Fu	32486965	Stroke	IF
Haixia Ma	27072135	J Biol Chem	WB

## Storage

Storage:

Store at -20°C. Stable for one year after shipment.

Storage Buffer:

PBS with 0.02% sodium azide and 50% glycerol, pH7.3

Aliquoting is unnecessary for -20°C storage

For technical support and original validation data for this product please contact:

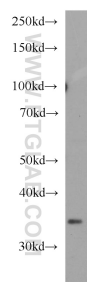
T: 4006900926

E: [Proteintech-CN@ptglab.com](mailto:Proteintech-CN@ptglab.com)

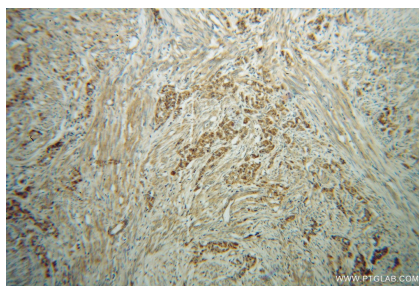
W: [ptgcn.com](http://ptgcn.com)

This product is exclusively available under Proteintech Group brand and is not available to purchase from any other manufacturer.

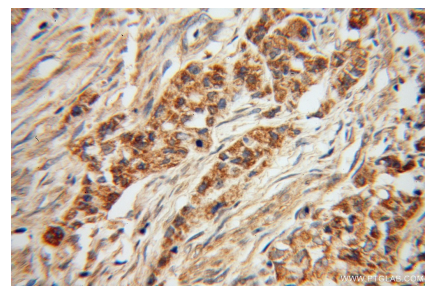
## Selected Validation Data



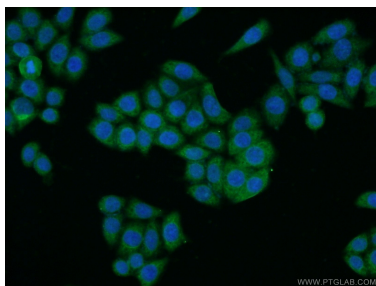
HeLa cells were subjected to SDS PAGE followed by western blot with 13991-1-AP (LEFTY2 antibody) at dilution of 1:500 incubated at room temperature for 1.5 hours.



Immunohistochemical analysis of paraffin-embedded human endometrial cancer using 13991-1-AP (LEFTY2 antibody) at dilution of 1:50 (under 10x lens).



Immunohistochemical analysis of paraffin-embedded human endometrial cancer using 13991-1-AP (LEFTY2 antibody) at dilution of 1:50 (under 40x lens).



Immunofluorescent analysis of HeLa cells using 13991-1-AP (LEFTY2 antibody) at dilution of 1:50 and Alexa Fluor 488-conjugated Goat Anti-Rabbit IgG(H+L).