

For Research Use Only

PPFIBP1 Polyclonal antibody

Catalog Number: 13961-1-AP **1 Publications**



Basic Information

Catalog Number:

13961-1-AP

Size:

450 µg/ml

Source:

Rabbit

Isotype:

IgG

Immunogen Catalog Number:

AG4884

GenBank Accession Number:

BC050281

GeneID (NCBI):

8496

UNIPROT ID:

Q86W92

Full Name:

PTPRF interacting protein, binding protein 1 (liprin beta 1)

Calculated MW:

1011 aa, 114 kDa

Observed MW:

114 kDa

Purification Method:

Antigen affinity purification

Recommended Dilutions:

WB 1:500-1:1000

IP 0.5-4.0 µg for 1.0-3.0 mg of total protein lysate

IHC 1:20-1:200

IF 1:50-1:500

Applications

Tested Applications:

FC, IF/ICC, IHC, IP, WB, ELISA

Cited Applications:

IF

Species Specificity:

human, mouse, rat

Cited Species:

human

Note-IHC: suggested antigen retrieval with TE buffer pH 9.0; (*) Alternatively, antigen retrieval may be performed with citrate buffer pH 6.0

Positive Controls:

WB: HepG2 cells, DU 145 cells

IP: HepG2 cells,

IHC: human colon cancer tissue,

IF: HepG2 cells,

Background Information

Notable Publications

Author	Pubmed ID	Journal	Application
Xingchen Li	37339751	Open Biol	IF

Storage

Storage:

Store at -20°C. Stable for one year after shipment.

Storage Buffer:

PBS with 0.02% sodium azide and 50% glycerol pH 7.3.

Aliquoting is unnecessary for -20°C storage

For technical support and original validation data for this product please contact:

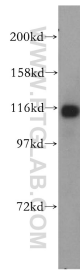
T: 4006900926

E: Proteintech-CN@ptglab.com

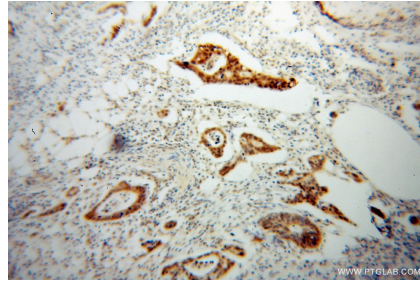
W: ptgcn.com

This product is exclusively available under Proteintech Group brand and is not available to purchase from any other manufacturer.

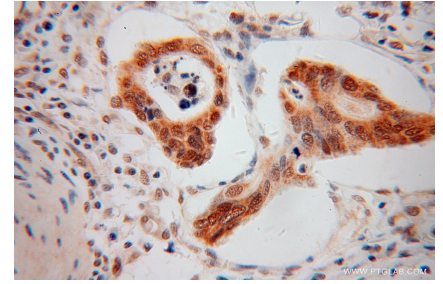
Selected Validation Data



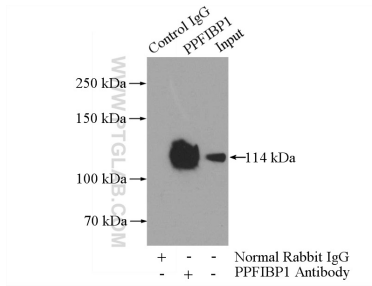
HepG2 cells were subjected to SDS PAGE followed by western blot with 13961-1-AP (PPFIBP1 antibody) at dilution of 1:1000 incubated at room temperature for 1.5 hours.



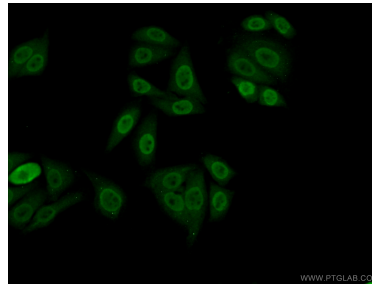
Immunohistochemical analysis of paraffin-embedded human colon cancer using 13961-1-AP (PPFIBP1 antibody) at dilution of 1:100 (under 10x lens).



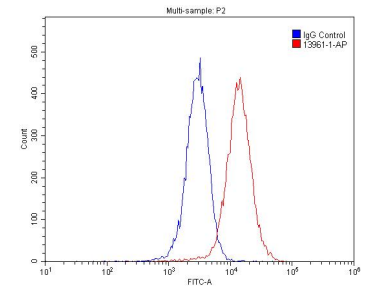
Immunohistochemical analysis of paraffin-embedded human colon cancer using 13961-1-AP (PPFIBP1 antibody) at dilution of 1:100 (under 40x lens).



IP result of anti-PPFIBP1 (IP:13961-1-AP, 4ug; Detection:13961-1-AP 1:500) with HepG2 cells lysate 2400ug.



Immunofluorescent analysis of (-20°C Ethanol) fixed HepG2 cells using 13961-1-AP (PPFIBP1 antibody) at dilution of 1:50 and Alexa Fluor 488-conjugated AffiniPure Goat Anti-Rabbit IgG(H+L).



1×10^6 HepG2 cells were stained with .2ug PPFIBP1 antibody (13961-1-AP, red) and control antibody (blue). Alexa Fluor 488-conjugated AffiniPure Goat Anti-Rabbit IgG(H+L) with dilution 1:1500. Cells were fixed with 4% PFA and permeabilized with 0.1% Triton X-100.