

For Research Use Only

WDFY1 Polyclonal antibody

Catalog Number: 13960-1-AP



Basic Information

Catalog Number:

13960-1-AP

Concentration:

400 µg/ml

Source:

Rabbit

Isotype:

IgG

Immunogen Catalog Number:

AG4877

GenBank Accession Number:

BC040525

GeneID (NCBI):

57590

UNIPROT ID:

Q8IWB7

Full Name:

WD repeat and FYVE domain
containing 1

Calculated MW:

410 aa, 46 kDa

Observed MW:

43-46 kDa

Purification Method:

Antigen affinity purification

Recommended Dilutions:

WB 1:500-1:3000

Applications

Tested Applications:

WB, ELISA

Species Specificity:

human, mouse, rat

Positive Controls:

WB : THP-1 cells, mouse testis tissue, rat testis tissue

Background Information

WD repeating domain FYVE1 (WDFY1) belongs to the WD40 protein family, which plays key roles in diverse cellular processes, including signal transduction, gene transcription, vesicle fusion, and spermatogenesis (PMID: 32867693; PMID: 10322433). WDFY1 is highly expressed in mouse testis and is dispensable for mouse spermatogenesis and male fertility (PMID: 35121371). The bands of 24 kDa and 19 kDa may be potential isoforms of WDFY1.

Storage

Storage:

Store at -20°C. Stable for one year after shipment.

Storage Buffer:

PBS with 0.02% sodium azide and 50% glycerol pH 7.3.

Aliquoting is unnecessary for -20°C storage

For technical support and original validation data for this product please contact:

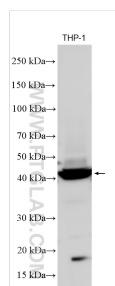
T: 4006900926

E: Proteintech-CN@ptglab.com

W: ptgcn.com

This product is exclusively available under Proteintech Group brand and is not available to purchase from any other manufacturer.

Selected Validation Data



THP-1 cells were subjected to SDS PAGE followed by western blot with 13960-1-AP (WDFY1 antibody) at dilution of 1:1500 incubated at room temperature for 1.5 hours.