

For Research Use Only

CHEK2 Polyclonal antibody

Catalog Number: 13954-1-AP

Featured Product

41 Publications



Basic Information

Catalog Number:

13954-1-AP

Source:

Rabbit

Isotype:

IgG

Immunogen Catalog Number:

AG5065

GenBank Accession Number:

BC004207

GeneID (NCBI):

11200

UNIPROT ID:

O96017

Full Name:

CHK2 checkpoint homolog (S. pombe)

Calculated MW:

61 kDa

Observed MW:

65 kDa

Purification Method:

Antigen affinity purification

Recommended Dilutions:

WB: 1:500-1:1000

IP: 0.5-4.0 ug for 1.0-3.0 mg of total protein lysate

IF/ICC: 1:50-1:500

Applications

Tested Applications:

WB, IF/ICC, IP, ELISA

Cited Applications:

WB, IHC, IF

Species Specificity:

human, mouse, rat

Cited Species:

human, mouse, rat

Positive Controls:

WB : HL-60 cells, HeLa cells, HepG2 cells

IP : HeLa cells,

IF/ICC : HepG2 cells,

Background Information

Chk2(Checkpoint kinase 2) is also named as CDS1, CHEK2, RAD53 and belongs to the CHK2 subfamily. It is a protein kinase that is activated in response to DNA damage and involved in cell cycle arrest. It also mediates the induction of senescence in fibroblasts, but is dispensable for the induction of telomere dysfunction checkpoints at the stem and progenitor cell level(PMID:20577265). This protein can exist as a dimer (PMID:19782031). Active forms of CHEK2 devoid of phosphorylation at Thr-68 can form unstable dimers(PMID:12386164). Defects in CHEK2 is a cause of susceptibility to breast cancer (BC)(PMID:21618645). It has 12 isoforms produced by alternative splicing.

Notable Publications

Author	Pubmed ID	Journal	Application
Xin Wen	36249018	Front Oncol	WB
Yiti Zhang	36232630	Int J Mol Sci	WB
Yeunting Hsieh	32988875	Anticancer Res	WB

Storage

Storage:

Store at -20°C. Stable for one year after shipment.

Storage Buffer:

PBS with 0.02% sodium azide and 50% glycerol, pH7.3

Aliquoting is unnecessary for -20°C storage

For technical support and original validation data for this product please contact:

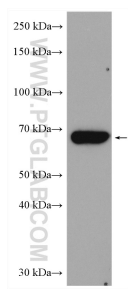
T: 4006900926

E: Proteintech-CN@ptglab.com

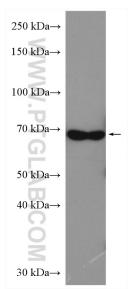
W: ptgcn.com

This product is exclusively available under Proteintech Group brand and is not available to purchase from any other manufacturer.

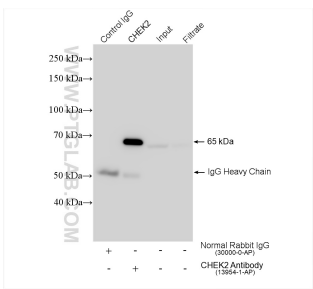
Selected Validation Data



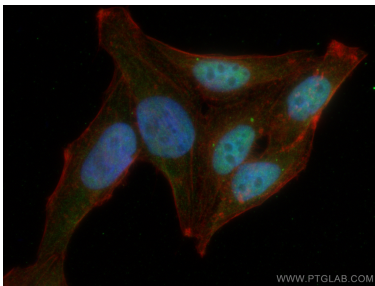
HL-60 cells were subjected to SDS PAGE followed by western blot with 13954-1-AP (Chk2 antibody) at dilution of 1:600 incubated at room temperature for 1.5 hours.



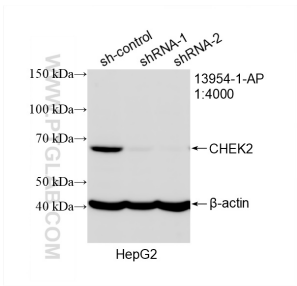
HeLa cells were subjected to SDS PAGE followed by western blot with 13954-1-AP (Chk2 antibody) at dilution of 1:600 incubated at room temperature for 1.5 hours.



IP result of anti-CHEK2 (IP:13954-1-AP, 4ug; Detection:13954-1-AP 1:4000) with HeLa cells lysate 1320 ug.



Immunofluorescent analysis of (4% PFA) fixed HepG2 cells using CHEK2 antibody (13954-1-AP) at dilution of 1:200 and Coralite® 488-Conjugated AffiniPure Goat Anti-Rabbit IgG(H+L), CL594-Phalloidin (red).



WB result of CHEK2 antibody (13954-1-AP; 1:4000; incubated at room temperature for 1.5 hours) with sh-Control and sh-CHEK2 transfected HepG2 cells.