

ADAM2 Polyclonal antibody

Catalog Number: 13952-1-AP

Basic Information

Catalog Number:

13952-1-AP

Size:

133 µg/ml

Source:

Rabbit

Isotype:

IgG

Immunogen Catalog Number:

AG5063

GenBank Accession Number:

BC034957

GeneID (NCBI):

2515

UNIPROT ID:

Q99965

Full Name:

ADAM metalloproteinase domain 2

Calculated MW:

82 kDa

Observed MW:

50-55 kDa, 65-75 kDa

Purification Method:

Antigen affinity purification

Recommended Dilutions:

WB 1:500-1:2000

Applications

Tested Applications:

WB, ELISA

Species Specificity:

human, mouse

Positive Controls:

WB : mouse testis tissue, human testis tissue

Background Information

The members of the ADAM (a disintegrin and metalloprotease) family are membrane-anchored multi-domain proteins that play prominent roles in male reproduction (PMID: 27341348). Fertilin, a heterodimeric protein complex composed of a(ADAM1) and b(ADAM2) subunits present on the sperm surface, has been believed to mediate adhesion and fusion between the sperm and egg plasma membranes. ADAM2-deficient mouse sperm is also defective in adhesion to and fusion with the egg membrane (PMID:16407235). It has 2 isoforms produced by alternative splicing and 5 glycosylation sites.

Storage

Storage:

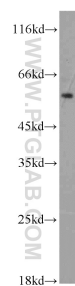
Store at -20°C. Stable for one year after shipment.

Storage Buffer:

PBS with 0.02% sodium azide and 50% glycerol pH 7.3.

Aliquoting is unnecessary for -20°C storage

Selected Validation Data



mouse testis tissue were subjected to SDS PAGE followed by western blot with 13952-1-AP (ADAM2 antibody) at dilution of 1:1000 incubated at room temperature for 1.5 hours.