

For Research Use Only

# ABCF1 Polyclonal antibody, PBS Only

Catalog Number: 13950-1-PBS

Featured Product



## Basic Information

**Catalog Number:**

13950-1-PBS

**Size:**

1 mg/ml

**Source:**

Rabbit

**Isotype:**

IgG

**Immunogen Catalog Number:**

AG5061

**GenBank Accession Number:**

BC034488

**GeneID (NCBI):**

23

**UNIPROT ID:**

Q8NE71

**Full Name:**

ATP-binding cassette, sub-family F (GCN20), member 1

**Calculated MW:**

92 kDa

**Observed MW:**

110 kDa

**Purification Method:**

Antigen affinity purification

## Applications

**Tested Applications:**

**Species Specificity:**

human, mouse, rat

## Background Information

ABCF1, also known as ABC27, and ABC50, is a member of the superfamily of ATP-binding cassette (ABC) transporters and contains two ABC transporter domains. ABC genes are divided into seven distinct subfamilies (ABC1, MDR/TAP, MRP, ALD, OABP, GCN20, White). Unlike other members of the superfamily, ABCF1 lacks the transmembrane domains that are characteristic of most ABC transporters. ABCF1 may be regulated by tumor necrosis factor-alpha and play a role in the enhancement of protein synthesis and thus participate in the inflammatory processes (PMID: 9790762).

## Storage

**Storage:**

Store at -80°C.

**The product is shipped with ice packs. Upon receipt, store it immediately at -80°C**

**Storage Buffer:**

PBS Only

For technical support and original validation data for this product please contact:

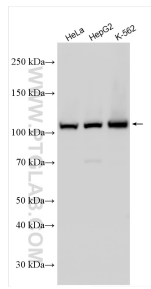
T: 4006900926

E: [Proteintech-CN@ptglab.com](mailto:Proteintech-CN@ptglab.com)

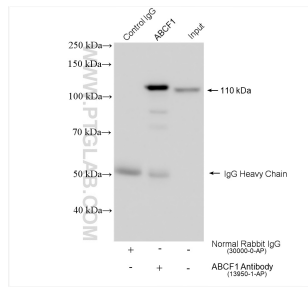
W: [ptgcn.com](http://ptgcn.com)

**This product is exclusively available under Proteintech Group brand and is not available to purchase from any other manufacturer.**

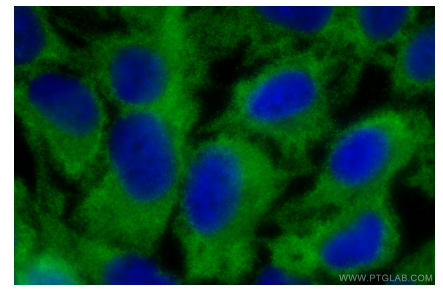
## Selected Validation Data



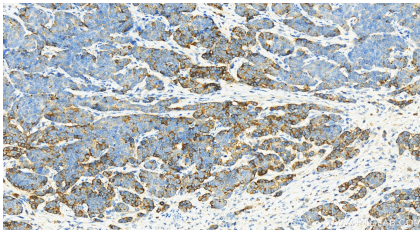
Various lysates were subjected to SDS PAGE followed by western blot with 13950-1-AP (ABCF1 antibody) at dilution of 1:5000 incubated at room temperature for 1.5 hours. This data was developed using the same antibody clone with 13950-1-PBS in a different storage buffer formulation.



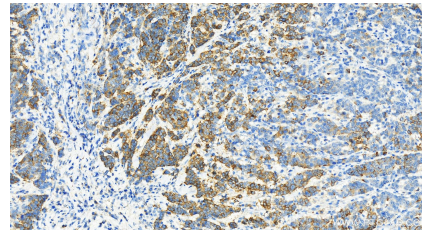
IP result of anti-ABCF1 (IP:13950-1-AP, 4 $\mu$ g; Detection:13950-1-AP 1:6000) with K-562 cells lysate 1360  $\mu$ g. This data was developed using the same antibody clone with 13950-1-PBS in a different storage buffer formulation.



Immunofluorescent analysis of (-20°C Ethanol) fixed HeLa cells using ABCF1 antibody (13950-1-AP) at dilution of 1:400 and CoraLite®488-Conjugated AffiniPure Goat Anti-Rabbit IgG(H+L). This data was developed using the same antibody clone with 13950-1-PBS in a different storage buffer formulation.



Immunohistochemical analysis of paraffin-embedded stomach cancer slide using 13950-1-AP (ABCF1 antibody) at dilution of 1:1000 (under 20x lens). Heat mediated antigen retrieval with Tris-EDTA buffer (pH 9.0). This data was developed using the same antibody clone with 13950-1-PBS in a different storage buffer formulation.



Immunohistochemical analysis of paraffin-embedded stomach cancer slide using 13950-1-AP (ABCF1 antibody) at dilution of 1:1000 (under 20x lens). Heat mediated antigen retrieval with Tris-EDTA buffer (pH 9.0). This data was developed using the same antibody clone with 13950-1-PBS in a different storage buffer formulation.