

For Research Use Only

ABCF1 Polyclonal antibody

Catalog Number: 13950-1-AP

Featured Product

3 Publications



Basic Information

Catalog Number:

13950-1-AP

Size:

450 ug/ml

Source:

Rabbit

Isotype:

IgG

Immunogen Catalog Number:

AG5061

GenBank Accession Number:

BC034488

GeneID (NCBI):

23

UNIPROT ID:

Q8NE71

Full Name:

ATP-binding cassette, sub-family F (GCN20), member 1

Calculated MW:

92 kDa

Observed MW:

110 kDa

Purification Method:

Antigen affinity purification

Recommended Dilutions:

WB 1:2000-1:10000

IP 0.5-4.0 ug for 1.0-3.0 mg of total protein lysate

IHC 1:500-1:2000

IF/ICC 1:200-1:800

Applications

Tested Applications:

WB, IF/ICC, IP, ELISA

Cited Applications:

WB, IP, CoIP

Species Specificity:

human, mouse, rat

Cited Species:

human, mouse

Note-IHC: suggested antigen retrieval with TE buffer pH 9.0; (*) Alternatively, antigen retrieval may be performed with citrate buffer pH 6.0

Positive Controls:

WB : HeLa cells, K-562 cells, HepG2 cells

IP : K-562 cells,

IHC : human stomach cancer tissue,

IF/ICC : HeLa cells,

Background Information

ABCF1, also known as ABC27, and ABC50, is a member of the superfamily of ATP-binding cassette (ABC) transporters and contains two ABC transporter domains. ABC genes are divided into seven distinct subfamilies (ABC1, MDR/TAP, MRP, ALD, OABP, GCN20, White). Unlike other members of the superfamily, ABCF1 lacks the transmembrane domains that are characteristic of most ABC transporters. ABCF1 may be regulated by tumor necrosis factor- α and play a role in the enhancement of protein synthesis and thus participate in the inflammatory processes (PMID: 9790762).

Notable Publications

Author	Pubmed ID	Journal	Application
Eun-Bee Choi	34714667	Sci Adv	WB
Hitesh Arora	30770245	Immunity	CoIP
Han Hong	36625413	Proteomics	WB, IP

Storage

Storage:

Store at -20°C. Stable for one year after shipment.

Storage Buffer:

PBS with 0.02% sodium azide and 50% glycerol pH 7.3.

Aliquoting is unnecessary for -20°C storage

For technical support and original validation data for this product please contact:

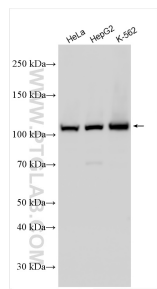
T: 4006900926

E: Proteintech-CN@ptglab.com

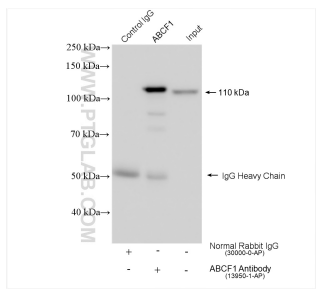
W: ptgcn.com

This product is exclusively available under Proteintech Group brand and is not available to purchase from any other manufacturer.

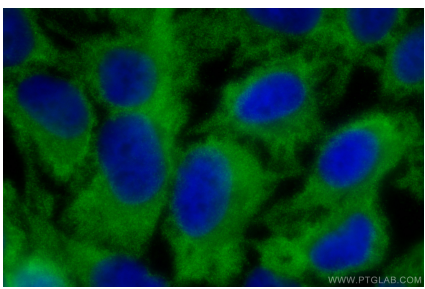
Selected Validation Data



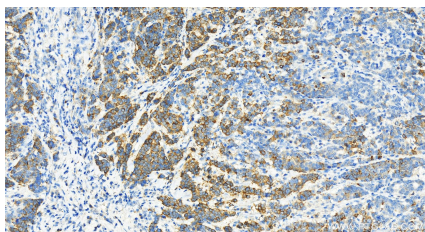
Various lysates were subjected to SDS PAGE followed by western blot with 13950-1-AP (ABCF1 antibody) at dilution of 1:5000 incubated at room temperature for 1.5 hours.



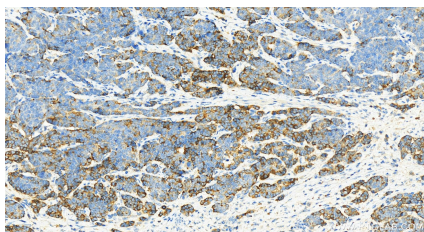
IP result of anti-ABCF1 (IP:13950-1-AP, 4ug; Detection:13950-1-AP 1:6000) with K-562 cells lysate 1360 ug.



Immunofluorescent analysis of (-20°C Ethanol) fixed HeLa cells using ABCF1 antibody (13950-1-AP) at dilution of 1:400 and CoraLite®488-Conjugated AffiniPure Goat Anti-Rabbit IgG(H+L).



Immunohistochemical analysis of paraffin-embedded stomach cancer slide using 13950-1-AP (ABCF1 antibody) at dilution of 1:1000 (under 20x lens). Heat mediated antigen retrieval with Tris-EDTA buffer (pH 9.0).



Immunohistochemical analysis of paraffin-embedded stomach cancer slide using 13950-1-AP (ABCF1 antibody) at dilution of 1:1000 (under 20x lens). Heat mediated antigen retrieval with Tris-EDTA buffer (pH 9.0).