

# MDP-1 Polyclonal antibody

Catalog Number: 13929-1-AP

## Basic Information

**Catalog Number:**

13929-1-AP

**Size:**

350 µg/ml

**Source:**

Rabbit

**Isotype:**

IgG

**Immunogen Catalog Number:**

AG4949

**GenBank Accession Number:**

BC046912

**GeneID (NCBI):**

145553

**UNIPROT ID:**

Q86V88

**Full Name:**

magnesium-dependent phosphatase

1

**Calculated MW:**

14 kDa

**Observed MW:**

14 kDa

**Purification Method:**

Antigen affinity purification

**Recommended Dilutions:**

WB 1:200-1:1000

IHC 1:20-1:200

## Applications

**Tested Applications:**

IHC, WB, ELISA

**Species Specificity:**

human, mouse, rat

**Note-IHC:** suggested antigen retrieval with **TE buffer pH 9.0; (\*) Alternatively, antigen retrieval may be performed with citrate buffer pH 6.0**

**Positive Controls:**

**WB :** RAW 264.7 cells, HepG2 cells

**IHC :** human liver tissue,

## Background Information

### Storage

**Storage:**

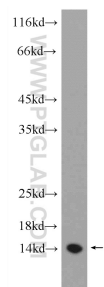
Store at -20°C. Stable for one year after shipment.

**Storage Buffer:**

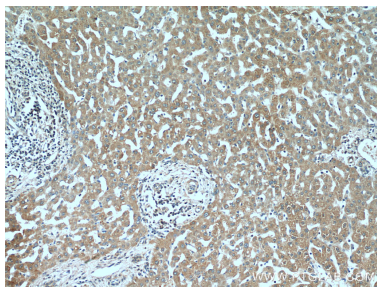
PBS with 0.02% sodium azide and 50% glycerol pH 7.3.

Aliquoting is unnecessary for -20°C storage

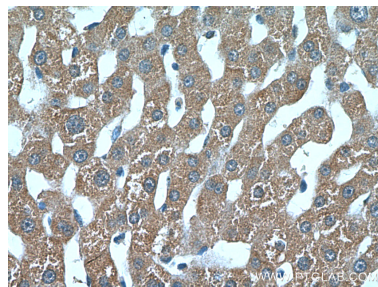
Selected Validation Data



RAW 264.7 cells were subjected to SDS PAGE followed by western blot with 13929-1-AP (MDP-1 Antibody) at dilution of 1:100 incubated at room temperature for 1.5 hours.



Immunohistochemical analysis of paraffin-embedded human liver tissue slide using 13929-1-AP (MDP-1 Antibody) at dilution of 1:100 (under 10x lens).



Immunohistochemical analysis of paraffin-embedded human liver tissue slide using 13929-1-AP (MDP-1 Antibody) at dilution of 1:100 (under 40x lens).