

For Research Use Only

# MTM1 Polyclonal antibody

Catalog Number: 13924-1-AP

1 Publications



## Basic Information

### Catalog Number:

13924-1-AP

### Size:

700 ug/ml

### Source:

Rabbit

### Isotype:

IgG

### Immunogen Catalog Number:

AG4940

### GenBank Accession Number:

BC030779

### GeneID (NCBI):

4534

### UNIPROT ID:

Q13496

### Full Name:

myotubularin 1

### Calculated MW:

70 kDa

### Observed MW:

65-70 kDa

### Purification Method:

Antigen affinity purification

### Recommended Dilutions:

WB 1:500-1:2000

IHC 1:50-1:500

IF/ICC 1:200-1:800

## Applications

### Tested Applications:

WB, IHC, IF/ICC, ELISA

### Cited Applications:

WB

### Species Specificity:

human, mouse, rat

### Cited Species:

pig

**Note-IHC: suggested antigen retrieval with TE buffer pH 9.0; (\*) Alternatively, antigen retrieval may be performed with citrate buffer pH 6.0**

### Positive Controls:

WB : L02 cells, Jurkat cells

IHC : rat skeletal muscle tissue, mouse skeletal muscle tissue

IF/ICC : L02 cells,

## Background Information

The MTM1(Myotubularin) gene encodes a protein that belongs to a family of putative tyrosine phosphatases. It is required for muscle cell differentiation. The protein is also a potent phosphatidylinositol 3-phosphate (PI3P) phosphatase, which is a 66 kDa ubiquitous protein that is found mutated in the X-linked genetic disorder myotubular myopathy(XLMTM).MTM1 could therefore act as a regulator of the highly active phosphoinositide (PI) metabolism in cells, where interconversions of the eight PIs described so far is controlled by a set of specific kinases and phosphatases(PMID:14660569). MTM1 has two isoforms with the molecular mass of 66kDa and 70 kDa.

## Notable Publications

Author	Pubmed ID	Journal	Application
Bing-Qian Su	38295116	PLoS Pathog	WB

## Storage

### Storage:

Store at -20°C. Stable for one year after shipment.

### Storage Buffer:

PBS with 0.02% sodium azide and 50% glycerol pH 7.3.

Aliquoting is unnecessary for -20°C storage

For technical support and original validation data for this product please contact:

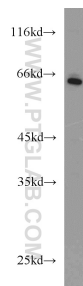
T: 4006900926

E: [Proteintech-CN@ptglab.com](mailto:Proteintech-CN@ptglab.com)

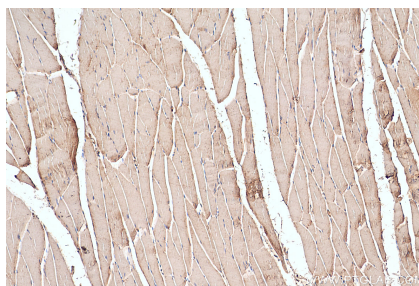
W: [ptgcn.com](http://ptgcn.com)

**This product is exclusively available under Proteintech Group brand and is not available to purchase from any other manufacturer.**

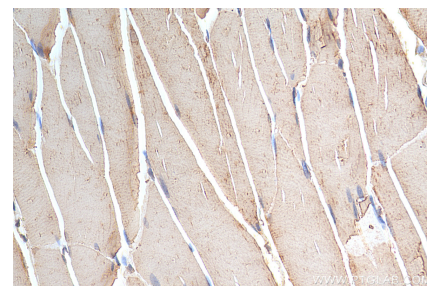
## Selected Validation Data



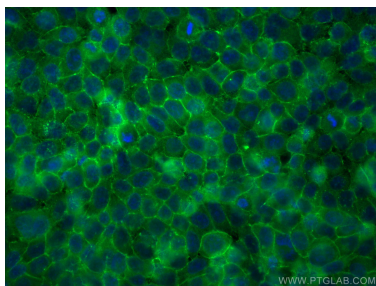
L02 cells were subjected to SDS PAGE followed by western blot with 13924-1-AP (MTM1 antibody) at dilution of 1:1000 incubated at room temperature for 1.5 hours.



Immunohistochemical analysis of paraffin-embedded rat skeletal muscle tissue slide using 13924-1-AP (MTM1 antibody) at dilution of 1:200 (under 10x lens). Heat mediated antigen retrieval with Tris-EDTA buffer (pH 9.0).



Immunohistochemical analysis of paraffin-embedded rat skeletal muscle tissue slide using 13924-1-AP (MTM1 antibody) at dilution of 1:200 (under 40x lens). Heat mediated antigen retrieval with Tris-EDTA buffer (pH 9.0).



Immunofluorescent analysis of (-20°C Ethanol) fixed L02 cells using MTM1 antibody (13924-1-AP) at dilution of 1:400 and CoraLite®488-Conjugated AffiniPure Goat Anti-Rabbit IgG(H+L).