

For Research Use Only

# PTPRE Polyclonal antibody

Catalog Number: 13922-1-AP

Featured Product

2 Publications



## Basic Information

**Catalog Number:**

13922-1-AP

**Size:**

450 µg/ml

**Source:**

Rabbit

**Isotype:**

IgG

**Immunogen Catalog Number:**

AG4932

**GenBank Accession Number:**

BC050062

**GeneID (NCBI):**

5791

**UNIPROT ID:**

P23469

**Full Name:**

protein tyrosine phosphatase, receptor type, E

**Calculated MW:**

81 kDa

**Observed MW:**

81 kDa

**Purification Method:**

Antigen affinity purification

**Recommended Dilutions:**

WB 1:200-1:1000

IHC 1:50-1:500

## Applications

**Tested Applications:**

IHC, WB, ELISA

**Cited Applications:**

WB, IHC

**Species Specificity:**

human

**Cited Species:**

human

**Note-IHC: suggested antigen retrieval with TE buffer pH 9.0; (\*) Alternatively, antigen retrieval may be performed with citrate buffer pH 6.0**

**Positive Controls:**

WB : HL-60 cells,

IHC : human breast cancer tissue, human liver tissue

## Background Information

### Notable Publications

Author	Pubmed ID	Journal	Application
Bingqing Chen	33344226	Front Oncol	WB
Renshun Dong	38458013	Biomed Pharmacother	IHC

## Storage

**Storage:**

Store at -20°C. Stable for one year after shipment.

**Storage Buffer:**

PBS with 0.02% sodium azide and 50% glycerol pH 7.3.

Aliquoting is unnecessary for -20°C storage

For technical support and original validation data for this product please contact:

T: 4006900926

E: Proteintech-CN@ptglab.com

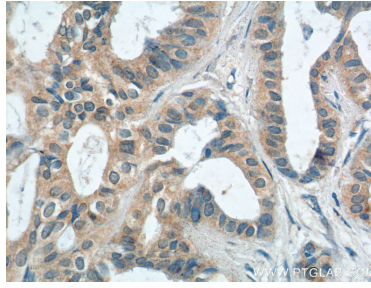
W: ptgcn.com

**This product is exclusively available under Proteintech Group brand and is not available to purchase from any other manufacturer.**

## Selected Validation Data



HL-60 cells were subjected to SDS PAGE followed by western blot with 13922-1-AP (PTPRE antibody) at dilution of 1:300 incubated at room temperature for 1.5 hours.



Immunohistochemical analysis of paraffin-embedded human breast cancer tissue slide using 13922-1-AP (PTPRE Antibody) at dilution of 1:200 (under 40x lens).