

SLC6A11 Polyclonal antibody

Catalog Number: 13920-1-AP

3 Publications

Basic Information

Catalog Number:

13920-1-AP

Size:

650 µg/ml

Source:

Rabbit

Isotype:

IgG

Immunogen Catalog Number:

AG4927

GenBank Accession Number:

BC036083

GeneID (NCBI):

6538

UNIPROT ID:

P48066

Full Name:

solute carrier family 6
(neurotransmitter transporter, GABA),
member 11

Calculated MW:

71 and 23 kDa

Observed MW:

65-70 kDa

Purification Method:

Antigen affinity purification

Recommended Dilutions:

WB 1:500-1:1000

IHC 1:200-1:800

Applications

Tested Applications:

IHC, WB, ELISA

Cited Applications:

WB, IF

Species Specificity:

human, mouse

Cited Species:

mouse

**Note-IHC: suggested antigen retrieval with
TE buffer pH 9.0; (*) Alternatively, antigen
retrieval may be performed with citrate
buffer pH 6.0**

Positive Controls:

WB : mouse cerebellum tissue,

IHC : mouse brain tissue,

Background Information

Notable Publications

Author	Pubmed ID	Journal	Application
Xiao-Hui Tang	36565851	Neuropharmacology	WB
Yuchen Qin	38759534	Ecotoxicol Environ Saf	WB
Zila Martinez-Lozada	37525469	J Neurochem	IF

Storage

Storage:

Store at -20°C. Stable for one year after shipment.

Storage Buffer:

PBS with 0.02% sodium azide and 50% glycerol pH 7.3.

Aliquoting is unnecessary for -20°C storage

For technical support and original validation data for this product please contact:

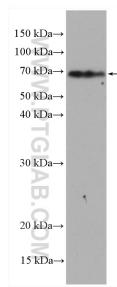
T: 4006900926

E: Proteintech-CN@ptglab.com

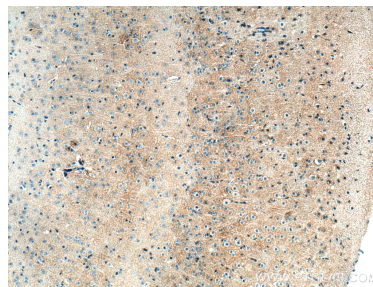
W: ptgcn.com

This product is exclusively available under Proteintech Group brand and is not available to purchase from any other manufacturer.

Selected Validation Data



mouse cerebellum tissue were subjected to SDS PAGE followed by western blot with 13920-1-AP (SLC6A11 antibody) at dilution of 1:500 incubated at room temperature for 1.5 hours.



Immunohistochemical analysis of paraffin-embedded mouse brain tissue slide using 13920-1-AP (SLC6A11 antibody) at dilution of 1:400 (under 10x lens). Heat mediated antigen retrieval with Tris-EDTA buffer (pH 9.0).