

For Research Use Only

# RBM17 Polyclonal antibody

Catalog Number: 13918-1-AP **2 Publications**



## Basic Information

<b>Catalog Number:</b> 13918-1-AP	<b>GenBank Accession Number:</b> BC039322	<b>Purification Method:</b> Antigen affinity purification
<b>Size:</b> 850 µg/ml	<b>GeneID (NCBI):</b> 84991	<b>Recommended Dilutions:</b> WB 1:1000-1:6000 IF 1:20-1:200
<b>Source:</b> Rabbit	<b>UNIPROT ID:</b> Q96125	
<b>Isotype:</b> IgG	<b>Full Name:</b> RNA binding motif protein 17	
<b>Immunogen Catalog Number:</b> AG4921	<b>Calculated MW:</b> 401 aa, 45 kDa	
	<b>Observed MW:</b> 45 kDa	

## Applications

<b>Tested Applications:</b> WB, IF, ICC, ELISA	<b>Positive Controls:</b>
<b>Cited Applications:</b> WB	<b>WB:</b> BxPC-3 cells, MCF-7 cells, HeLa cells, A2780 cells, PC-3 cells
<b>Species Specificity:</b> human, mouse, rat	<b>IF:</b> HeLa cells,
<b>Cited Species:</b> human, mouse	

## Background Information

RNA-binding motif protein 17 (RBM17), also named splicing factor 45, was first identified as a member of the spliceosome. RBM17 expression is low in normal tissues but is overexpressed in several forms of cancer, including breast, ovarian and prostate.

## Notable Publications

Author	Pubmed ID	Journal	Application
Sean-Patrick Riechers	26908611	Hum Mol Genet	WB
Dongni Chen	35365208	J Exp Clin Cancer Res	WB

## Storage

**Storage:**  
Store at -20°C. Stable for one year after shipment.  
**Storage Buffer:**  
PBS with 0.02% sodium azide and 50% glycerol pH 7.3.  
Aliquoting is unnecessary for -20°C storage

For technical support and original validation data for this product please contact:

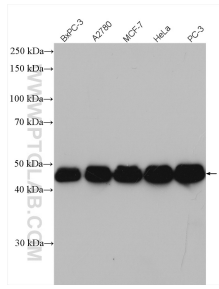
T: 4006900926

E: [Proteintech-CN@ptglab.com](mailto:Proteintech-CN@ptglab.com)

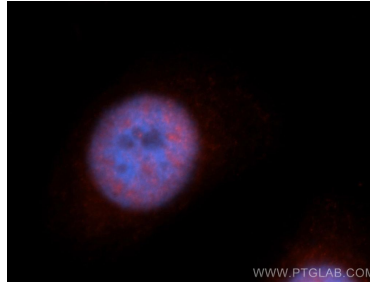
W: [ptgcn.com](http://ptgcn.com)

**This product is exclusively available under Proteintech Group brand and is not available to purchase from any other manufacturer.**

## Selected Validation Data



Various lysates were subjected to SDS PAGE followed by western blot with 13918-1-AP (RBM17 antibody) at dilution of 1:3000 incubated at room temperature for 1.5 hours.



Immunofluorescent analysis of HeLa cells, using RBM17 antibody 13918-1-AP at 1:50 dilution and Rhodamine-labeled goat anti-rabbit IgG (red). Blue pseudocolor = DAPI (fluorescent DNA dye).